

## HIC2 RABBIT PAB

**Cat.#:** S215950

**Product Name:** Anti-HIC2 Rabbit Polyclonal Antibody

**Synonyms:** HRG22; ZBTB30; ZNF907

**UNIPROT ID:** Q96JB3 (Gene Accession - NP\_055909 )

**Background:** Transcriptional repressor.

**Immunogen:** Synthetic peptide of human HIC2

**Applications:** ELISA, IHC

**Recommended Dilutions:** IHC: 50-200; ELISA: 5000-10000

**Host Species:** Rabbit

**Clonality:** Rabbit Polyclonal

**Isotype:** Immunogen-specific rabbit IgG

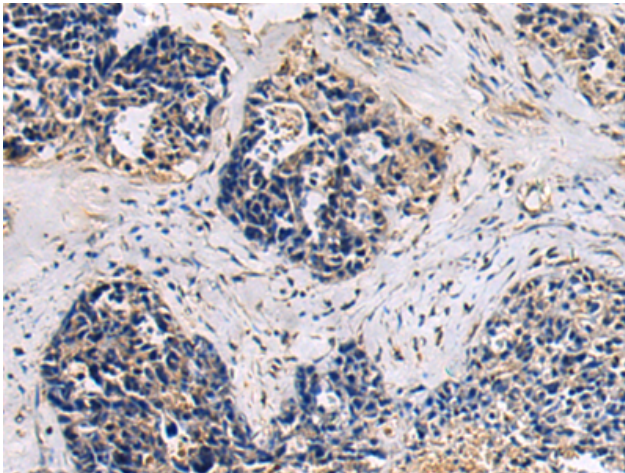
**Purification:** Antigen affinity purification

**Species Reactivity:** Human, Mouse

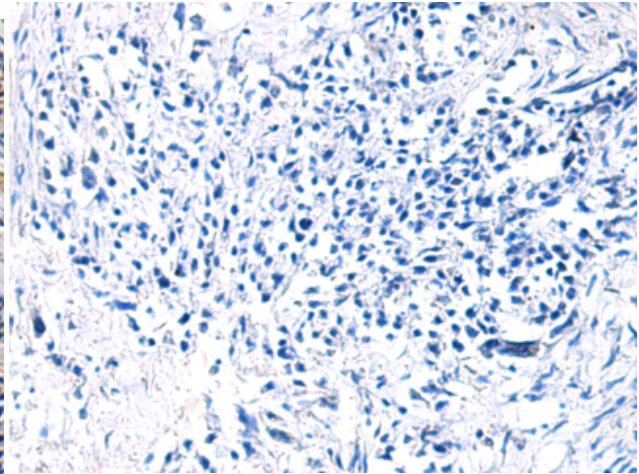
**Constituents:** PBS (without Mg<sup>2+</sup> and Ca<sup>2+</sup>), pH 7.4, 150 mM NaCl, 0.05% Sodium Azide and 40% glycerol

**Research Areas:** Epigenetics and Nuclear Signaling

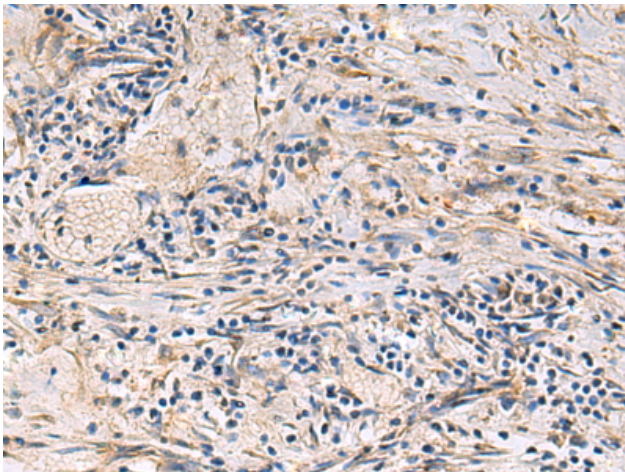
**Storage & Shipping:** Store at -20°C. Avoid repeated freezing and thawing



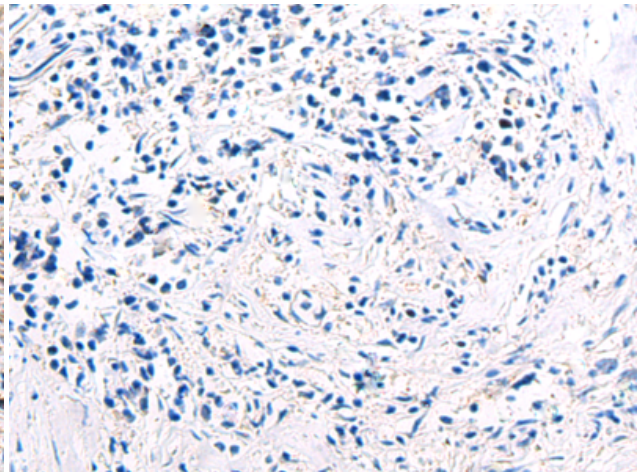
Immunohistochemistry analysis of paraffin embedded Human ovarian cancer using 215950 (HIC2 Antibody) at a dilution of 1/75 (Cytoplasm).



In comparison with the IHC on the left, the same paraffin-embedded Human ovarian cancer is first treated with the synthetic peptide and then with 215950 (Anti-HIC2 Antibody) at dilution 1/75.



The image on the left is immunohistochemistry of paraffin-embedded Human breast cancer using 215950 (Anti-HIC2 Antibody) at a dilution of 1/75.



In comparison with the IHC on the left, the same paraffin-embedded Human breast cancer is first treated with synthetic peptide and then with D164178 (Anti-HIC2 Antibody) at dilution 1/75.