

## HIF1AN RABBIT PAB

**Cat.#:** S214616

**Product Name:** Anti-HIF1AN Rabbit Polyclonal Antibody

**Synonyms:** FIH1

**UNIPROT ID:** Q9NWT6 (Gene Accession - NP\_060372)

**Background:** Factor inhibiting HIF-1 (FIH-1) exists as a homodimer and binds to HIF-1alpha. Specifically, FIH-1 operates as an asparaginyl hydroxylase. It catalyzes the hydroxylation of the beta-carbon of Asparagine residue 803 within the carboxy terminal transactivation domain of HIF-1alpha. This hydroxylation event blocks the association of HIF-1alpha with co-activators. FIH-1 also binds to von Hippel-Lindau (VHL) tumor suppressor protein, which represses transcriptional activity of HIF-1alpha. In transiently transfected human osteosarcoma cells, FIH-1 localizes to the cytoplasm.

**Immunogen:** Synthetic peptide of human HIF1AN

**Applications:** ELISA, WB, IHC

**Recommended Dilutions:** IHC: 50-300;WB: 500-2000;ELISA: 2000-10000

**Host Species:** Rabbit

**Clonality:** Rabbit Polyclonal

**Isotype:** Immunogen-specific rabbit IgG

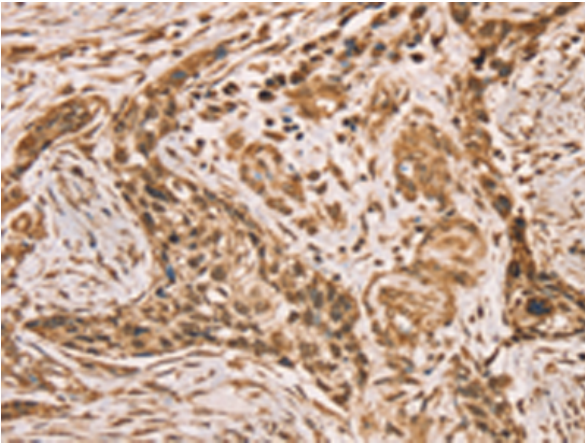
**Purification:** Antigen affinity purification

**Species Reactivity:** Human, Mouse

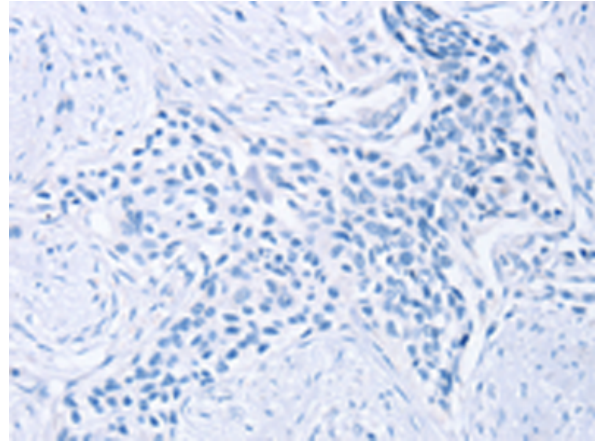
**Constituents:** PBS (without Mg<sup>2+</sup> and Ca<sup>2+</sup>), pH 7.4, 150 mM NaCl, 0.05% Sodium Azide and 40% glycerol

**Research Areas:** Cardiovascular, Epigenetics and Nuclear Signaling

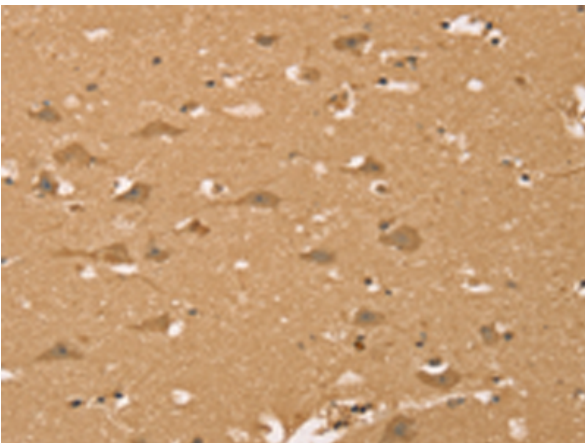
**Storage & Shipping:** Store at -20°C. Avoid repeated freezing and thawing



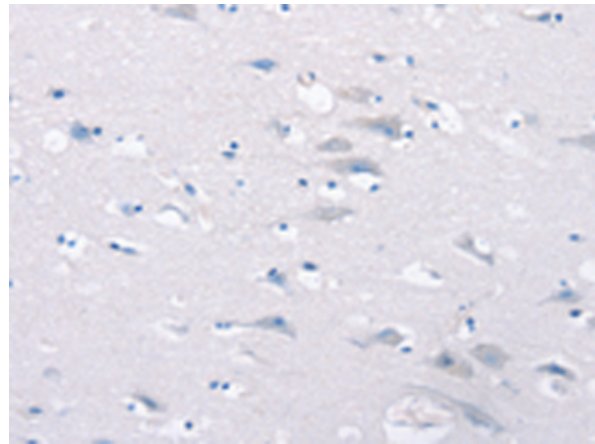
Immunohistochemistry analysis of paraffin embedded Human esophagus cancer tissue using 214616(HIF1AN Antibody) at a dilution of 1/40(Cytoplasm and Nucleus).



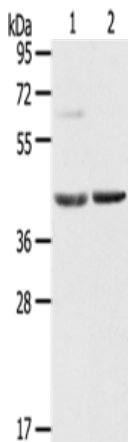
In comparison with the IHC on the left, the same paraffin-embedded Human esophagus cancer tissue is first treated with the synthetic peptide and then with 214616(Anti-HIF1AN Antibody) at dilution 1/40.



The image on the left is immunohistochemistry of paraffin-embedded Human brain tissue using 214616(Anti-HIF1AN Antibody) at a dilution of 1/40.



In comparison with the IHC on the left, the same paraffin-embedded Human brain tissue is first treated with synthetic peptide and then with D162109(Anti-HIF1AN Antibody) at dilution 1/40.



Gel: 8%SDS-PAGE, Lysate: 60 µg;  
Lane 1-2: Mouse brain tissue, Mouse liver tissue;  
Primary antibody: 214616(HIF1AN Antibody) at dilution 1/200;  
Secondary antibody: Goat anti rabbit IgG at 1/8000 dilution;  
Exposure time: 20 seconds



# Product Description

Pioneering GTPase and Oncogene Product Development since 2010

---