

HINT1 RABBIT MAB

Cat.#: N263363

Product Name: Anti-HINT1 Rabbit Monoclonal Antibody

Synonyms: HINT1; HINT; PKCII; PRKCNH1; Histidine triad nucleotide-binding protein 1; Adenosine 5'-monophosphoramidase; Protein kinase C inhibitor 1; Protein kinase C-interacting protein 1; PKCI-1

UNIPROT ID: P49773

Background: Exhibits adenosine 5'-monophosphoramidase activity, hydrolyzing purine nucleotide phosphoramidates with a single phosphate group such as adenosine 5'monophosphoramidate (AMP-NH₂) to yield AMP and NH₂.

Immunogen: A synthetic peptide of human HINT1

Applications: WB, ICC/IF, IP

Recommended Dilutions: WB: 1/500-1/1000 IF: 1/50-1/200 IP: 1/20

Host Species: Rabbit

Clonality: Rabbit Monoclonal

Clone ID: R08-0E8

MW: Calculated MW: 14 kDa; Observed MW: 14 kDa

Isotype: IgG

Purification: Affinity Purified

Species Reactivity: Human

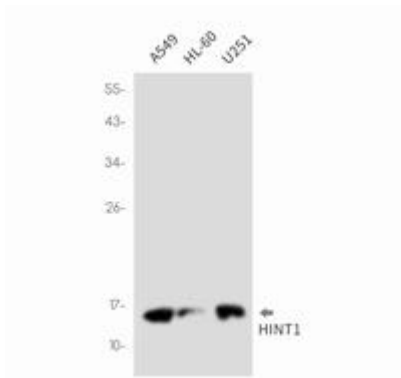
Conjugation: Unconjugated

Modification: Unmodified

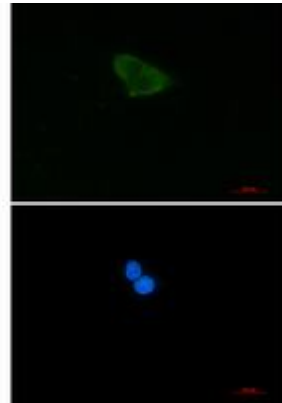
Constituents: PBS (without Mg²⁺ and Ca²⁺), pH 7.3 containing 50% glycerol, 0.5% BSA and 0.02% sodium azide

Research Areas: Epigenetics and Nuclear Signaling

Storage & Shipping: Store at -20°C. Avoid repeated freezing and thawing



Western blot analysis of HINT1 in A549, HL-60, U251 lysates using HINT1 antibody.



Immunocytochemistry analysis of HINT1 (green) in Hela using HINT1 antibody, and DAPI (blue).