

HINT2 RABBIT PAB

Cat.#: S216552

Product Name: Anti-HINT2 Rabbit Polyclonal Antibody

Synonyms: HIT-17

UNIPROT ID: Q9BX68 (Gene Accession - BC047737)

Background: Hint2 (histidine triad nucleotide binding protein 2), also known as HIT-17, is a 163 amino acid secreted protein that contains one HIT domain, a histidine triad that has catalytic activity toward the γ -phosphate of ribonucleotides. Via its HIT domain, Hint2 is thought to function as a hydrolase that is encoded by a gene which maps to chromosome 9. Chromosome 9 contains 145 million base pairs and comprises 4% of the human genome, encoding nearly 900 genes. Hereditary hemorrhagic telangiectasia and Familial dysautonomia are both associated with chromosome 9. Notably, chromosome 9 encompasses the largest interferon family gene cluster.

Immunogen: Fusion protein of human HINT2

Applications: ELISA, WB, IHC

Recommended Dilutions: IHC: 50-200;WB: 500-2000;ELISA: 2000-5000

Host Species: Rabbit

Clonality: Rabbit Polyclonal

Isotype: Immunogen-specific rabbit IgG

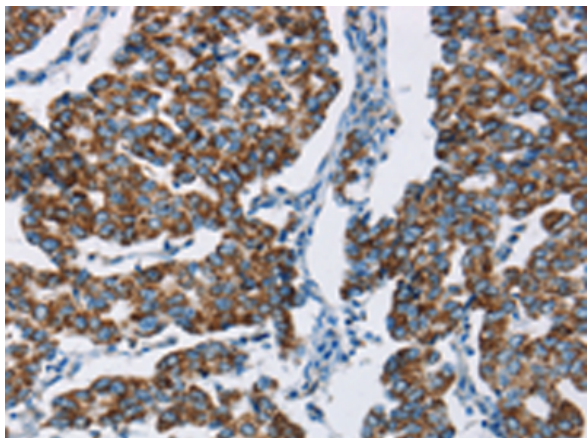
Purification: Antigen affinity purification

Species Reactivity: Human, Mouse

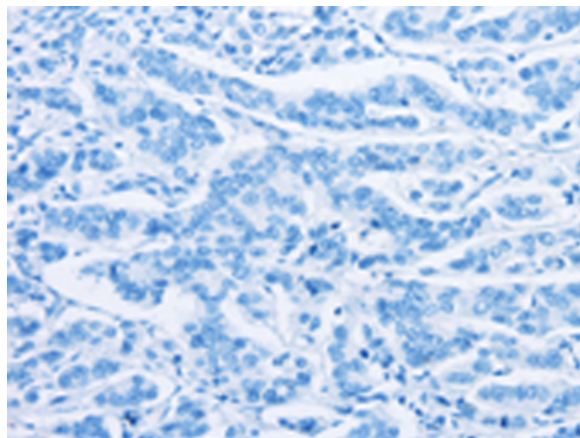
Constituents: PBS (without Mg²⁺ and Ca²⁺), pH 7.4, 150 mM NaCl, 0.05% Sodium Azide and 40% glycerol

Research Areas: Signal Transduction

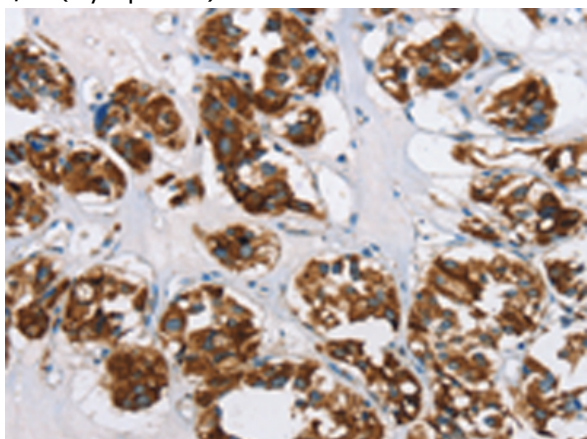
Storage & Shipping: Store at -20°C. Avoid repeated freezing and thawing



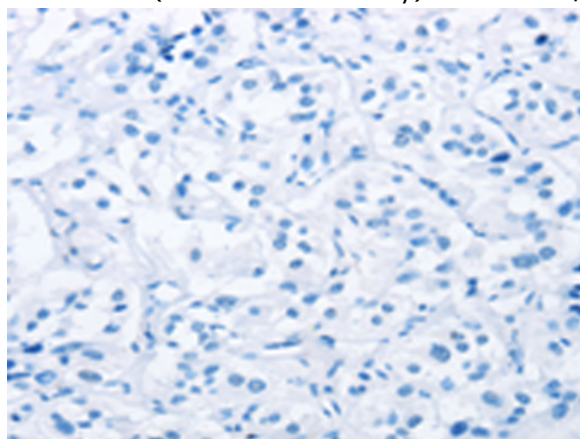
Immunohistochemistry analysis of paraffin embedded Human breast cancer tissue using 216552(HINT2 Antibody) at a dilution of 1/50(Cytoplasm).



In comparison with the IHC on the left, the same paraffin-embedded Human breast cancer tissue is first treated with the fusion protein and then with 216552(Anti-HINT2 Antibody) at dilution 1/50.



The image on the left is immunohistochemistry of paraffin-embedded Human thyroid cancer tissue using 216552(Anti-HINT2 Antibody) at a dilution of 1/50.



In comparison with the IHC on the left, the same paraffin-embedded Human thyroid cancer tissue is first treated with fusion protein and then with D220742(Anti-HINT2 Antibody) at dilution 1/50.



Gel: 12%SDS-PAGE, Lysate: 40 µg;
 Lane 1-2: Mouse heart tissue, human hepatocellular carcinoma tissue;
 Primary antibody: 216552(HINT2 Antibody) at dilution 1/300;
 Secondary antibody: Goat anti rabbit IgG at 1/8000 dilution;
 Exposure time: 20 seconds



Product Description

Pioneering GTPase and Oncogene Product Development since 2010
