

HIPK1 RABBIT PAB

Cat.#: S220598

Product Name: Anti-HIPK1 Rabbit Polyclonal Antibody

Synonyms: Myak; Nbak2

UNIPROT ID: Q86Z02 (Gene Accession - NP_938009)

Background: The protein encoded by this gene belongs to the Ser/Thr family of protein kinases and HIPK subfamily. It phosphorylates homeodomain transcription factors and may also function as a co-repressor for homeodomain transcription factors. Alternative splicing results in four transcript variants encoding four distinct isoforms.

Immunogen: Synthetic peptide of human HIPK1

Applications: ELISA, IHC

Recommended Dilutions: IHC: 50-100; ELISA: 1000-2000

Host Species: Rabbit

Clonality: Rabbit Polyclonal

Isotype: Immunogen-specific rabbit IgG

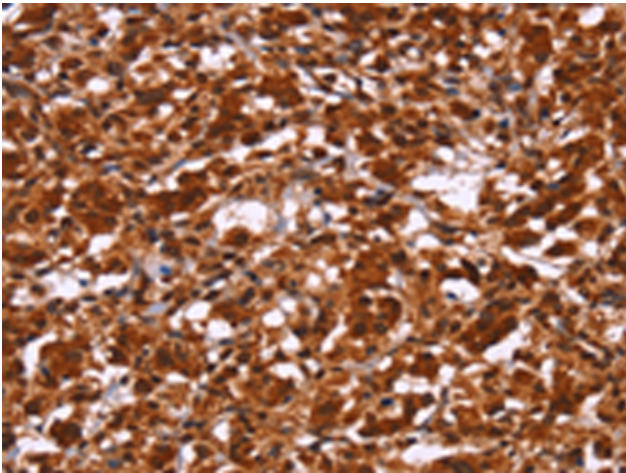
Purification: Antigen affinity purification

Species Reactivity: Human, Mouse, Rat

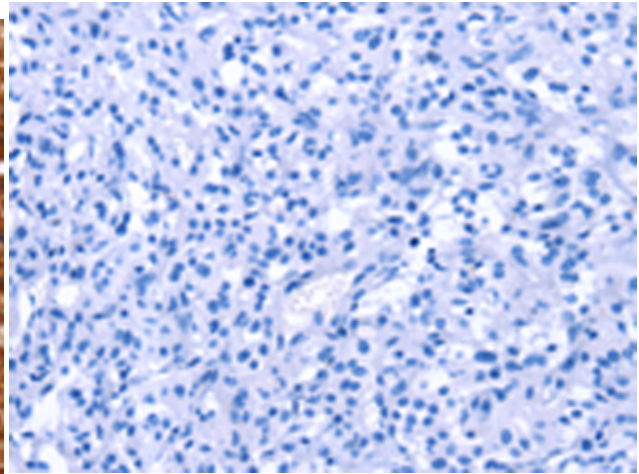
Constituents: PBS (without Mg²⁺ and Ca²⁺), pH 7.4, 150 mM NaCl, 0.05% Sodium Azide and 40% glycerol

Research Areas: Signal Transduction, Epigenetics and Nuclear Signaling

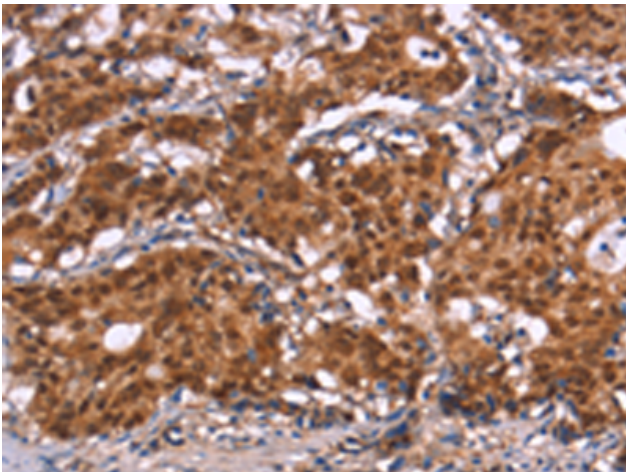
Storage & Shipping: Store at -20°C. Avoid repeated freezing and thawing



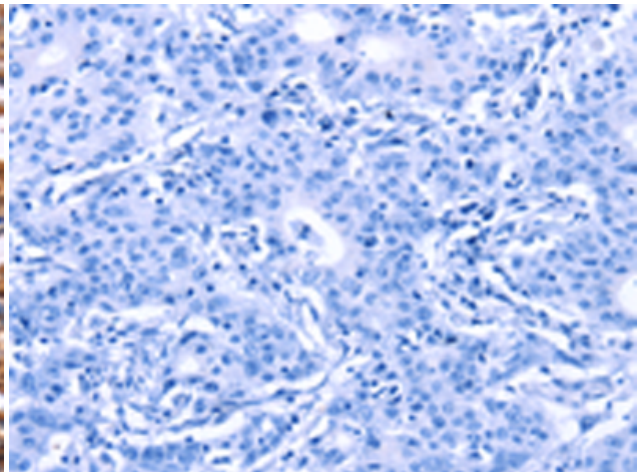
Immunohistochemistry analysis of paraffin embedded Human thyroid cancer tissue using 220598(HIPK1 Antibody) at a dilution of 1/30(Nucleus).



In comparison with the IHC on the left, the same paraffin-embedded Human thyroid cancer tissue is first treated with the synthetic peptide and then with 220598(Anti-HIPK1 Antibody) at dilution 1/30.



The image on the left is immunohistochemistry of paraffin-embedded Human gastric cancer tissue using 220598(Anti-HIPK1 Antibody) at a dilution of 1/30.



In comparison with the IHC on the left, the same paraffin-embedded Human gastric cancer tissue is first treated with synthetic peptide and then with D261743(Anti-HIPK1 Antibody) at dilution 1/30.