

HISTONE H1.0 RABBIT MAB

Cat.#: N262326

Product Name: Anti-Histone H1.0 Rabbit Monoclonal Antibody

Synonyms: Histone H1.0; Histone H1(0); Histone H1.0; N-terminally processed; H1F0; H1FV; Histone H5

UNIPROT ID: P07305

Background: Histone H1.0 is a lysine rich member of the H1 family of linker histones. The H1 family of proteins interacts with linker DNA between nucleosomes and mediates compaction into higher order chromatin. Histones H1 are necessary for the condensation of nucleosome chains into higher-order structures. The H1F0 histones are found in cells that are in terminal stages of differentiation or that have low rates of cell division.

Immunogen: A synthetic peptide of human Histone H1.0

Applications: WB,IHC-P

Recommended Dilutions: WB: 1/500-1/1000 IHC: 1/50-1/100

Host Species: Rabbit

Clonality: Rabbit Monoclonal

Clone ID: R07-0E8

MW: Calculated MW: 21 kDa; Observed MW: 30 kDa

Isotype: IgG

Purification: Affinity Purified

Species Reactivity: Human,Rat,Hamster

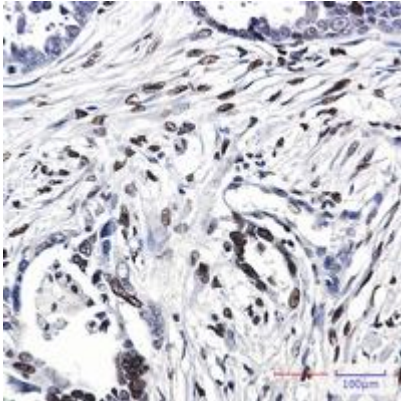
Conjugation: Unconjugated

Modification: Unmodified

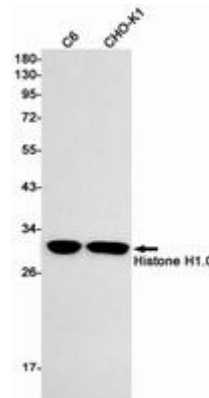
Constituents: PBS (without Mg²⁺ and Ca²⁺), pH 7.3 containing 50% glycerol, 0.5% BSA and 0.02% sodium azide

Research Areas: Epigenetics and Nuclear Signaling

Storage & Shipping: Store at -20°C. Avoid repeated freezing and thawing



Immunohistochemistry analysis of paraffin-embedded Human Cholangiocarcinoma using Histone H1.0 antibody. High-pressure and temperature Sodium Citrate pH 6.0 was used for antigen retrieval.



Western blot analysis of Histone H1.0 in C6, CHO-K1 lysates using Histone H1.0 antibody.