

HLA A RABBIT MAB

Cat.#: N262338

Product Name: Anti-HLA A Rabbit Monoclonal Antibody

Synonyms: Aw-68; HLA class I histocompatibility antigen; A-28 alpha chain; MHC class I antigen A*68; HLA-A; MHC class I antigen HLA A heavy chain

UNIPROT ID: P04439

Background: Major histocompatibility complex (MHC) molecules form an integral part of the immune response system. They are cell-surface receptors that bind peptides and present them to T lymphocytes. HLA-A, -B and -C encode membrane anchored heavy chains which heterodimerize with a light chain (b-2-Microglobulin) to form MHC-I. Polymorphisms yield hundreds of HLA-A, -B and -C alleles.

Immunogen: A synthetic peptide of human HLA A

Applications: WB,IHC-F,IHC-P,ICC/IF,IP

Recommended Dilutions: WB: 1/500-1/1000 IHC: 1/50-1/100 IF: 1/50-1/200 IP: 1/20

Host Species: Rabbit

Clonality: Rabbit Monoclonal

Clone ID: R05-5H7

MW: Calculated MW: 41 kDa; Observed MW: 41 kDa

Isotype: IgG

Purification: Affinity Purified

Species Reactivity: Human

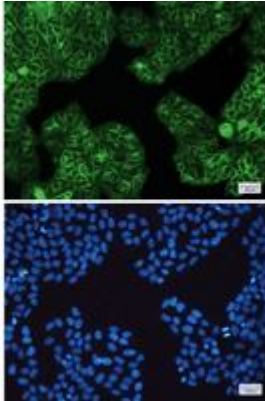
Conjugation: Unconjugated

Modification: Unmodified

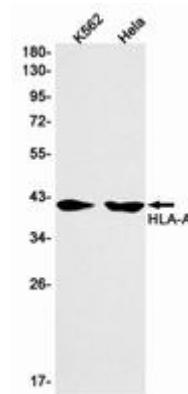
Constituents: PBS (without Mg²⁺ and Ca²⁺), pH 7.3 containing 50% glycerol, 0.5% BSA and 0.02% sodium azide

Research Areas: Immunology

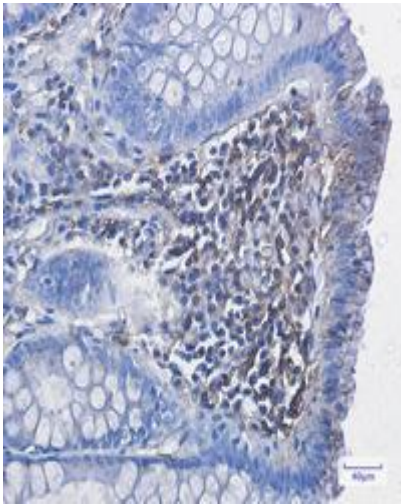
Storage & Shipping: Store at -20°C. Avoid repeated freezing and thawing



Immunocytochemistry analysis of HLA A (green) in HeLa using HLA A antibody, and DAPI (blue)



Western blot analysis of HLA A in K562, HeLa lysates using HLA A antibody.



Immunohistochemistry analysis of paraffin-embedded Human colon cancer using HLA A antibody. High-pressure and temperature Sodium Citrate pH 6.0 was used for antigen retrieval.