

HLA A RABBIT PAB

Cat.#: N225214

Product Name: Anti-HLA A Rabbit pAb

Synonyms: Aw-68; HLA class I histocompatibility antigen; A-28 alpha chain; MHC class I antigen A*68; HLA-A; MHC class I antigen HLA A heavy chain

UNIPROT

ID: P01891/P01892/P04439/P05534/P10314/P10316/P13746/P16189/P18462/P30443/P30450/P30453/P30455/P30456/P30457/P30512/Q09160

Background: Antigen-presenting major histocompatibility complex class I (MHC I) molecule. In complex with B2M/beta 2 microglobulin displays primarily viral and tumor-derived peptides on antigen-presenting cells for recognition by alpha-beta T cell receptor (TCR) on HLA-A-restricted CD8-positive T cells, guiding antigen-specific T cell immune response to eliminate infected or transformed cells.

Immunogen: The antiserum was produced against synthesized peptide derived from human HLA Class I. AA range:204-253

Applications: WB,ELISA

Recommended Dilutions: WB: 1/500-1/1000 ELISA: 1/10000

Host Species: Rabbit

Clonality: Rabbit Polyclonal

Clone ID: -

MW: Calculated MW: 41 kDa; Observed MW: 41 kDa

Isotype: IgG

Purification: Affinity Purified

Species Reactivity: Human

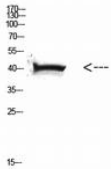
Conjugation: Unconjugated

Modification: Unmodified

Constituents: PBS (without Mg²⁺ and Ca²⁺), pH 7.3 containing 50% glycerol, 0.5% BSA and 0.02% sodium azide

Research Areas: Immunology

Storage & Shipping: Store at -20°C. Avoid repeated freezing and thawing



Western blot analysis of HLA A in HELA lysates using HLA A antibody.