

## HLA C RABBIT MAB

**Cat.#:** N262339

**Product Name:** Anti-HLA C Rabbit Monoclonal Antibody

**Synonyms:** MHC; HLAC; HLC-C; D6S204; PSORS1; HLA-JY3

**UNIPROT ID:** P10321

**Background:** Antigen-presenting major histocompatibility complex class I (MHC I) molecule with an important role in reproduction and antiviral immunity.

**Immunogen:** A synthetic peptide of human HLA-C

**Applications:** WB,IP

**Recommended Dilutions:** WB: 1/500-1/1000 IP: 1/20

**Host Species:** Rabbit

**Clonality:** Rabbit Monoclonal

**Clone ID:** R08-5H3

**MW:** Calculated MW: 41 kDa; Observed MW: 41 kDa

**Isotype:** IgG

**Purification:** Affinity Purified

**Species Reactivity:** Human,Mouse

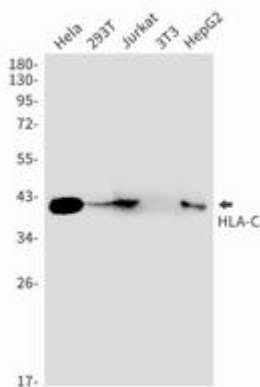
**Conjugation:** Unconjugated

**Modification:** Unmodified

**Constituents:** PBS (without Mg<sup>2+</sup> and Ca<sup>2+</sup>), pH 7.3 containing 50% glycerol, 0.5% BSA and 0.02% sodium azide

**Research Areas:** Immunology

**Storage & Shipping:** Store at -20°C. Avoid repeated freezing and thawing



Western blot analysis of HLAC in HeLa, 293T, Jurkat, 3T3, HepG2 lysates using HLA C antibody.



# Product Description

Pioneering GTPase and Oncogene Product Development since 2010

---