

HLA DQB1/2 RABBIT PAB

Cat.#: N225039

Product Name: Anti-HLA DQB1/2 Rabbit pAb

Synonyms: HLA-DQB1; HLA-DQB; HLA class II histocompatibility antigen; DQ beta 1 chain; MHC class II antigen DQB1; HLA-DQB2; HLA-DXB; HLA class II histocompatibility antigen; DQ beta 2 chain; HLA class II histocompatibility antigen; DX beta chain; MHC class II antigen DQB2

UNIPROT ID: P01920/P05538

Background: Binds peptides derived from antigens that access the endocytic route of antigen presenting cells (APC) and presents them on the cell surface for recognition by the CD4 T-cells. The peptide binding cleft accommodates peptides of 10-30 residues. The peptides presented by MHC class II molecules are generated mostly by degradation of proteins that access the endocytic route, where they are processed by lysosomal proteases and other hydrolases.

Immunogen: The antiserum was produced against synthesized peptide derived from the Internal region of human HLA-DQB1/HLA-DQB2. AA range:131-180

Applications: WB,IHC-P,ELISA

Recommended Dilutions: WB: 1/500-1/1000 IHC: 1/50-1/100 ELISA: 1/10000

Host Species: Rabbit

Clonality: Rabbit Polyclonal

Clone ID: -

MW: Calculated MW: 30 kDa; Observed MW: 30 kDa

Isotype: IgG

Purification: Affinity Purified

Species Reactivity: Human

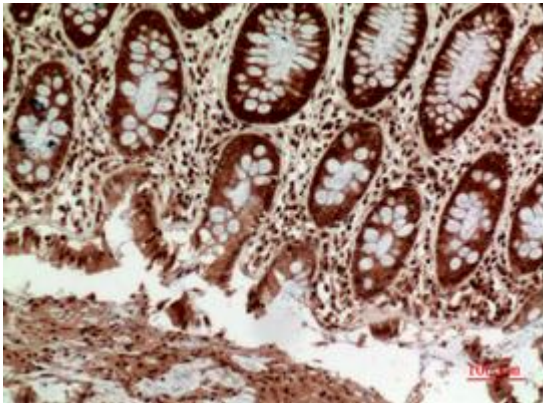
Conjugation: Unconjugated

Modification: Unmodified

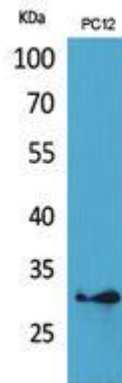
Constituents: PBS (without Mg²⁺ and Ca²⁺), pH 7.3 containing 50% glycerol, 0.5% BSA and 0.02% sodium azide

Research Areas: Immunology

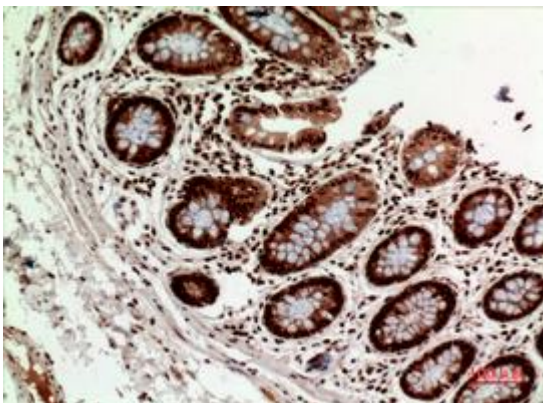
Storage & Shipping: Store at -20°C. Avoid repeated freezing and thawing



Immunohistochemistry analysis of paraffin-embedded Human colon using HLA DQB1/2 antibody. High-pressure and temperature Sodium Citrate pH 6.0 was used for antigen retrieval.



Western blot analysis of HLA DQB1/2 in PC-12 lysates using HLA DQB1/2 antibody.



Immunohistochemistry analysis of paraffin-embedded Human colon using HLA DQB1/2 antibody. High-pressure and temperature Sodium Citrate pH 6.0 was used for antigen retrieval.



Immunohistochemistry analysis of paraffin-embedded Human spleen using HLA DQB1/2 antibody. High-pressure and temperature Sodium Citrate pH 6.0 was used for antigen retrieval.