

## HLA-DRB3 RABBIT PAB

**Cat.#:** S222186

**Product Name:** Anti-HLA-DRB3 Rabbit Polyclonal Antibody

**Synonyms:** HLA-DR1B; HLA-DR3B

**UNIPROT ID:** P79483 (Gene Accession - NP\_072049 )

**Background:** HLA-DRB3 belongs to the HLA class II beta chain paralogues. This class II molecule is a heterodimer consisting of an alpha (DRA) and a beta (DRB) chain, both anchored in the membrane. It plays a central role in the immune system by presenting peptides derived from extracellular proteins. Class II molecules are expressed in antigen presenting cells (APC: B lymphocytes, dendritic cells, macrophages). The beta chain is approximately 26-28 kDa and its gene contains 6 exons. Exon one encodes the leader peptide, exons 2 and 3 encode the two extracellular domains, exon 4 encodes the transmembrane domain and exon 5 encodes the cytoplasmic tail. Within the DR molecule the beta chain contains all the polymorphisms specifying the peptide binding specificities. Typing for these polymorphisms is routinely done for bone marrow and kidney transplantation. DRB1 is expressed at a level five times higher than its paralogues DRB3, DRB4 and DRB5. The presence of DRB3 is linked with allelic variants of DRB1, otherwise it is omitted. There are 4 related pseudogenes: DRB2, DRB6, DRB7, DRB8 and DRB9.

**Immunogen:** Synthetic peptide of human HLA-DRB3

**Applications:** ELISA, WB, IHC

**Recommended Dilutions:** IHC: Oct-50;WB: 300-1000;ELISA: 5000-10000

**Host Species:** Rabbit

**Clonality:** Rabbit Polyclonal

**Isotype:** Immunogen-specific rabbit IgG

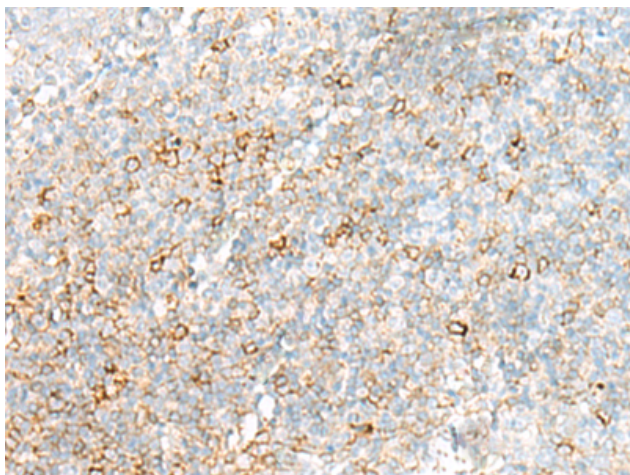
**Purification:** Antigen affinity purification

**Species Reactivity:** Human

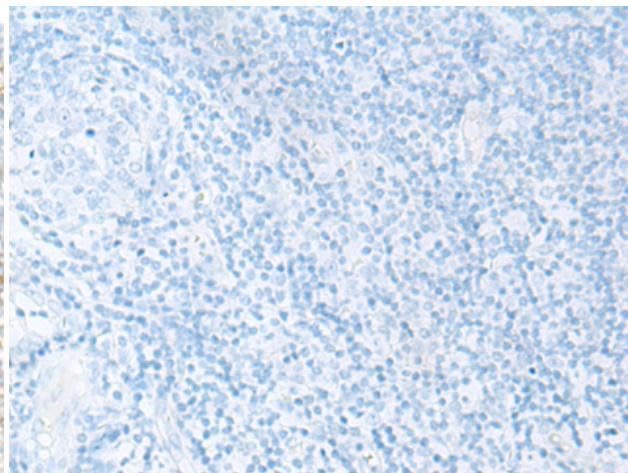
**Constituents:** PBS (without Mg<sup>2+</sup> and Ca<sup>2+</sup>), pH 7.4, 150 mM NaCl, 0.05% Sodium Azide and 40% glycerol

**Research Areas:** Immunology

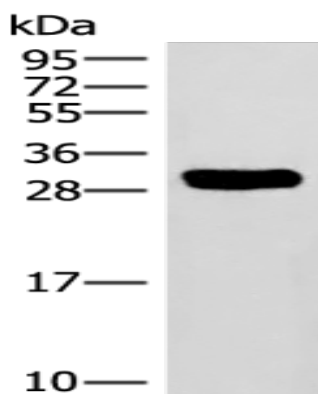
**Storage & Shipping:** Store at -20°C. Avoid repeated freezing and thawing



Immunohistochemistry analysis of paraffin embedded Human tonsil tissue using 222186(HLA-DRB3 Antibody) at a dilution of 1/25(Cell membrane).



In comparison with the IHC on the left, the same paraffin-embedded Human tonsil tissue is first treated with the synthetic peptide and then with 222186(Anti-HLA-DRB3 Antibody) at dilution 1/25.



Gel: 12%SDS-PAGE, Lysate: 40  $\mu$ g;  
Lane: Raji cell lysate;  
Primary antibody: 222186(HLA-DRB3 Antibody) at dilution 1/320;  
Secondary antibody: Goat anti rabbit IgG at 1/8000 dilution;  
Exposure time: 3 minutes