

HLTF RABBIT MAB

Cat.#: N262340

Product Name: Anti-HLTF Rabbit Monoclonal Antibody

Synonyms: HIP116; HIP116A; HLTF 1; Hltf; HLTF1; p113; RNF80; SMARC A3; SMARCA 3; SMARCA3; SNF2L3; ZBU1

UNIPROT ID: Q14527

Background: Has both helicase and E3 ubiquitin ligase activities. Possesses intrinsic ATP-dependent nucleosome-remodeling activity; This activity may be required for transcriptional activation or repression of specific target promoters (By similarity).

Immunogen: A synthetic peptide of human HLTF

Applications: WB, ICC/IF

Recommended Dilutions: WB: 1/500-1/1000 IF: 1/50-1/200

Host Species: Rabbit

Clonality: Rabbit Monoclonal

Clone ID: R03-1E4

MW: Calculated MW: 114 kDa; Observed MW: 114 kDa

Isotype: IgG

Purification: Affinity Purified

Species Reactivity: Human

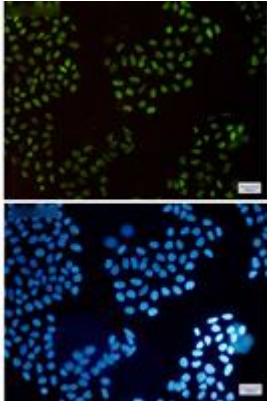
Conjugation: Unconjugated

Modification: Unmodified

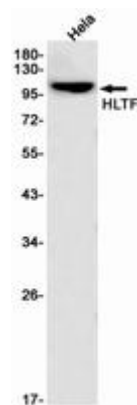
Constituents: PBS (without Mg²⁺ and Ca²⁺), pH 7.3 containing 50% glycerol, 0.5% BSA and 0.02% sodium azide

Research Areas: Cell Biology

Storage & Shipping: Store at -20°C. Avoid repeated freezing and thawing



Immunocytochemistry analysis of HLTF (green) in HeLa using HLTF antibody, and DAPI (blue)



Western blot analysis of HLTF in HeLa lysates using HLTF antibody.