

HMGB1 RABBIT PAB

Cat.#: S219852

Product Name: Anti-HMGB1 Rabbit Polyclonal Antibody

Synonyms: HMG1; HMG3; HMG-1; SBP-1

UNIPROT ID: P09429 (Gene Accession - NP_002119)

Background: This gene encodes a protein that belongs to the High Mobility Group-box superfamily. The encoded non-histone, nuclear DNA-binding protein regulates transcription, and is involved in organization of DNA. This protein plays a role in several cellular processes, including inflammation, cell differentiation and tumor cell migration. Multiple pseudogenes of this gene have been identified. Alternative splicing results in multiple transcript variants that encode the same protein.

Immunogen: Synthetic peptide of human HMGB1

Applications: ELISA, WB, IHC

Recommended Dilutions: IHC: 50-200;WB: 1000-5000;ELISA: 5000-10000

Host Species: Rabbit

Clonality: Rabbit Polyclonal

Isotype: Immunogen-specific rabbit IgG

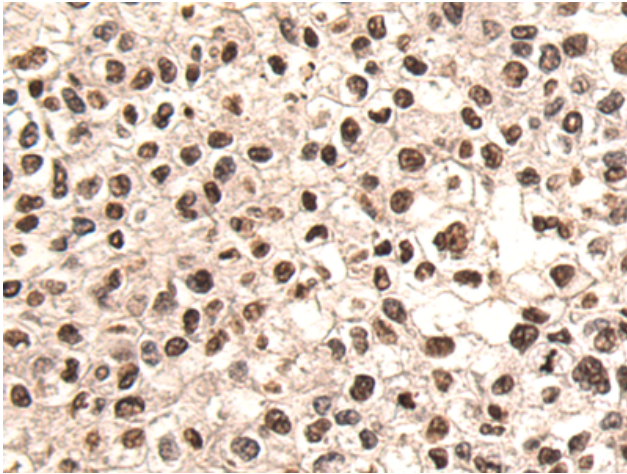
Purification: Antigen affinity purification

Species Reactivity: Human, Mouse, Rat

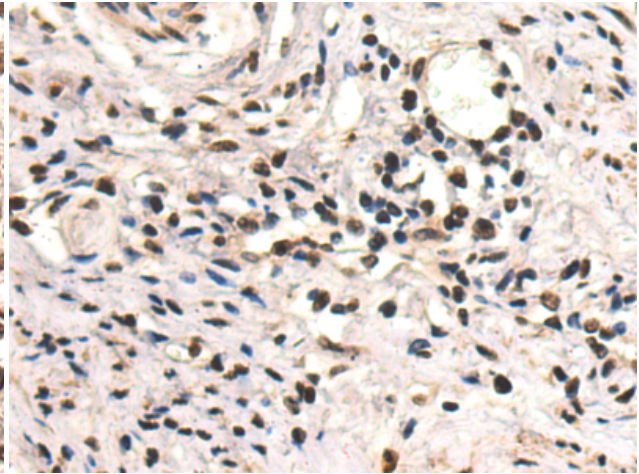
Constituents: PBS (without Mg²⁺ and Ca²⁺), pH 7.4, 150 mM NaCl, 0.05% Sodium Azide and 40% glycerol

Research Areas: Epigenetics and Nuclear Signaling

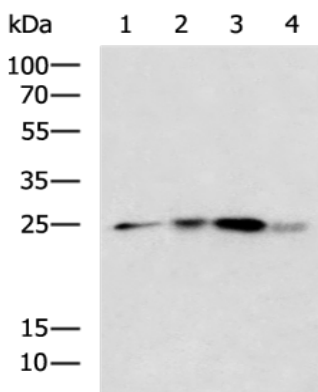
Storage & Shipping: Store at -20°C. Avoid repeated freezing and thawing



Immunohistochemistry analysis of paraffin-embedded Human liver cancer tissue using 219852(HMGB1 Antibody) at a dilution of 1/50(Nucleus).



Immunohistochemistry analysis of paraffin-embedded Human cervical cancer tissue using 219852(Anti-HMGB1 Antibody) at a dilution of 1/50.



Gel: 12%SDS-PAGE, Lysate: 40 µg;
 Lane 1-4: Human 2-3 grade invasive ductal breast tissue, LO2, 293T, Jurkat cell lysates;
 Primary antibody: 219852(HMGB1 Antibody) at dilution 1/1200;
 Secondary antibody: HRP-conjugated Goat anti rabbit IgG at 1/5000 dilution;
 Exposure time: 3 seconds