

## HMGB3 RABBIT PAB

**Cat.#:** S219853

**Product Name:** Anti-HMGB3 Rabbit Polyclonal Antibody

**Synonyms:** HMG4, HMG-4, HMG2A, HMG-2a

**UNIPROT ID:** O15347 (Gene Accession - NP\_005333 )

**Background:** High-mobility group protein B3 is a protein that in humans is encoded by the HMGB3 gene. HMGB3 belongs to the high mobility group (HMG) protein superfamily. Like HMG1 and HMG2, HMGB3 contains DNA-binding HMG box domains and is classified into the HMG box subfamily. Members of the HMG box subfamily are thought to play a fundamental role in DNA replication, nucleosome assembly and transcription.

**Immunogen:** Synthetic peptide of human HMGB3

**Applications:** ELISA, WB, IHC

**Recommended Dilutions:** IHC: 25-100;WB: 500-2000;ELISA: 1000-5000

**Host Species:** Rabbit

**Clonality:** Rabbit Polyclonal

**Isotype:** Immunogen-specific rabbit IgG

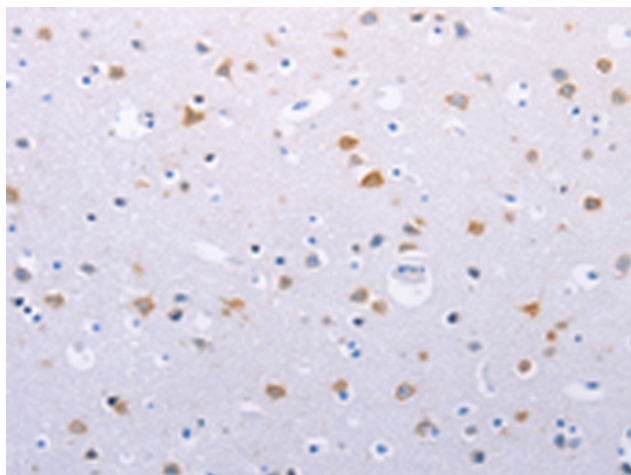
**Purification:** Antigen affinity purification

**Species Reactivity:** Human, Mouse

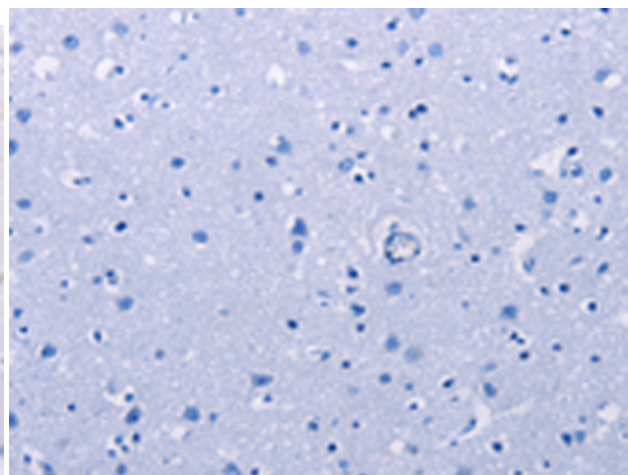
**Constituents:** PBS (without Mg<sup>2+</sup> and Ca<sup>2+</sup>), pH 7.4, 150 mM NaCl, 0.05% Sodium Azide and 40% glycerol

**Research Areas:** Epigenetics and Nuclear Signaling

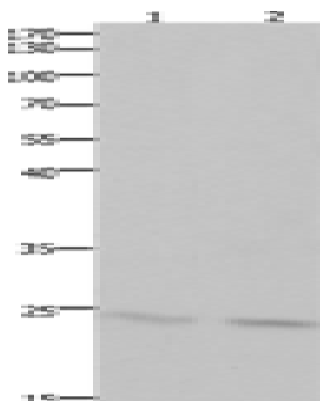
**Storage & Shipping:** Store at -20°C. Avoid repeated freezing and thawing



Immunohistochemistry analysis of paraffin embedded Human brain tissue using 219853(HMGB3 Antibody) at a dilution of 1/30(Nucleus).



In comparison with the IHC on the left, the same paraffin-embedded Human brain tissue is first treated with the synthetic peptide and then with 219853(Anti-HMGB3 Antibody) at dilution 1/30.



Gel: 10%SDS-PAGE, Lysate: 30  $\mu$ g;  
Lane 1-2: Mouse lung tissue, Mouse brain tissue;  
Primary antibody: 219853(HMGB3 Antibody) at dilution 1/700;  
Secondary antibody: Goat anti rabbit IgG at 1/8000 dilution;  
Exposure time: 1.5 minutes