

HMGCR RABBIT MAB

Cat.#: N262344

Product Name: Anti-HMGCR Rabbit Monoclonal Antibody

Synonyms: LDLCQ3

UNIPROT ID: P04035

Background: Transmembrane glycoprotein that is the rate-limiting enzyme in cholesterol biosynthesis as well as in the biosynthesis of nonsterol isoprenoids that are essential for normal cell function including ubiquinone and geranylgeranyl proteins.

Immunogen: A synthetic peptide of human HMGCR

Applications: WB,IP

Recommended Dilutions: WB: 1/500-1/1000 IP: 1/20

Host Species: Rabbit

Clonality: Rabbit Monoclonal

Clone ID: R04-2J3

MW: Calculated MW: 97 kDa; Observed MW: 97 kDa

Isotype: IgG

Purification: Affinity Purified

Species Reactivity: Human,Mouse

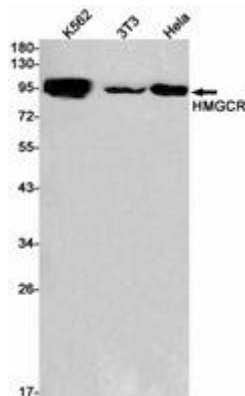
Conjugation: Unconjugated

Modification: Unmodified

Constituents: PBS (without Mg²⁺ and Ca²⁺), pH 7.3 containing 50% glycerol, 0.5% BSA and 0.02% sodium azide

Research Areas: Cardiovascular

Storage & Shipping: Store at -20°C. Avoid repeated freezing and thawing



Western blot analysis of HMGCR in K562, 3T3, HeLa lysates using HMGCR antibody.



Product Description

Pioneering GTPase and Oncogene Product Development since 2010
