

HMGCS1 RABBIT PAB

Cat.#: S220601

Product Name: Anti-HMGCS1 Rabbit Polyclonal Antibody

Synonyms: HMGCS

UNIPROT ID: Q01581 (Gene Accession - NP_001091742)

Background: HMG-CoA Synthase exists as both a mitochondrial (mHMGCS) and cytoplasmic (cHMGCS) enzyme that condenses acetyl-CoA with acetoacetyl-CoA to form HMG-CoA. The HMG-CoA produced by cHMGCS is transformed into mevalonate by HMG-CoA reductase, which starts isoprenoid biosynthesis. End products of the isoprenoid pathway include cholesterol, ubiquinone, dolichol, isopentenyl adenosine and farnesyl groups. mHMGCS, together with HMG-CoA Lyase, is responsible for ketone body biosynthesis. mHMGCS is expressed in liver and kidney. Fasting, cAMP and fatty acids increase the level of transcription of mHMGCS, while feeding and insulin repress it. A regulatory element within the mHMGCS promoter confers transcriptional regulation by PPAR, RXR, COUP-TF and HNF-4.

Immunogen: Synthetic peptide of human HMGCS1

Applications: ELISA, IHC

Recommended Dilutions: IHC: 50-200; ELISA: 2000-5000

Host Species: Rabbit

Clonality: Rabbit Polyclonal

Isotype: Immunogen-specific rabbit IgG

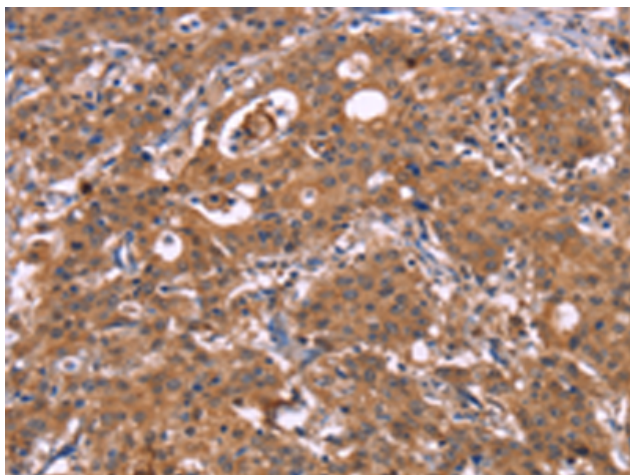
Purification: Antigen affinity purification

Species Reactivity: Human

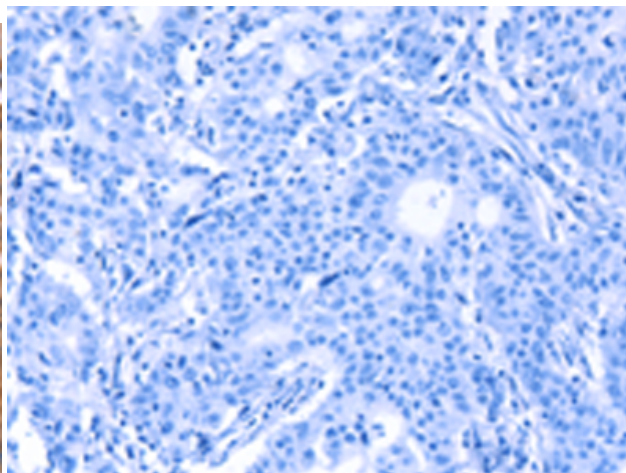
Constituents: PBS (without Mg²⁺ and Ca²⁺), pH 7.4, 150 mM NaCl, 0.05% Sodium Azide and 40% glycerol

Research Areas: Metabolism, Cancer, Cardiovascular

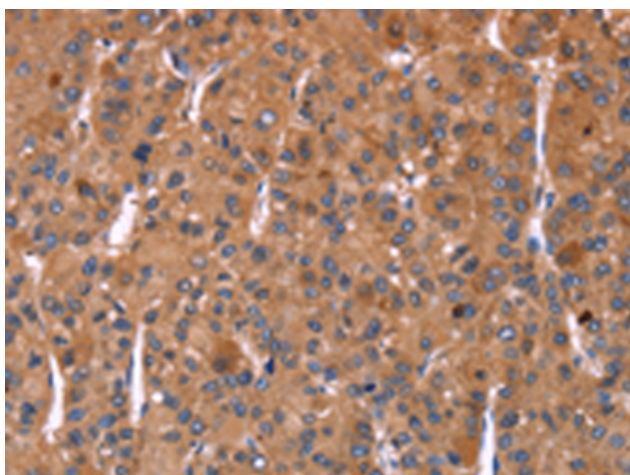
Storage & Shipping: Store at -20°C. Avoid repeated freezing and thawing



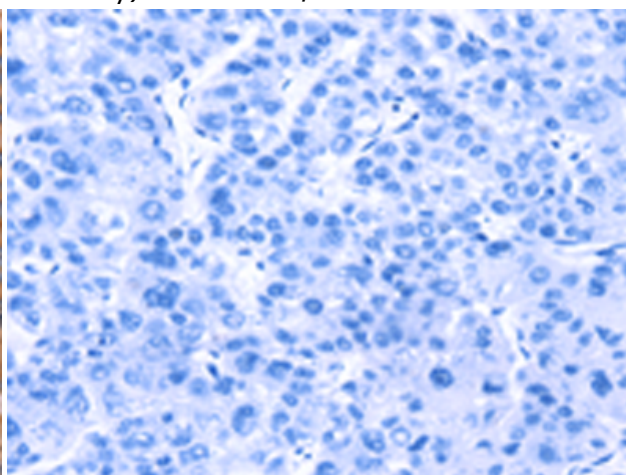
Immunohistochemistry analysis of paraffin embedded Human gastric cancer tissue using 220601(HMGCS1 Antibody) at a dilution of 1/40(Cytoplasm).



In comparison with the IHC on the left, the same paraffin-embedded Human gastric cancer tissue is first treated with the synthetic peptide and then with 220601(Anti-HMGCS1 Antibody) at dilution 1/40.



The image on the left is immunohistochemistry of paraffin-embedded Human liver cancer tissue using 220601(Anti-HMGCS1 Antibody) at a dilution of 1/40.



In comparison with the IHC on the left, the same paraffin-embedded Human liver cancer tissue is first treated with synthetic peptide and then with D261746(Anti-HMGCS1 Antibody) at dilution 1/40.