

HNRNPA3 RABBIT PAB

Cat.#: S222192

Product Name: Anti-HNRNPA3 Rabbit Polyclonal Antibody

Synonyms: FBRNP; HNRPA3; D10S102; 2610510D13Rik

UNIPROT ID: P51991 (Gene Accession - NP_919223)

Background: Plays a role in cytoplasmic trafficking of RNA. Binds to the cis-acting response element, A2RE. May be involved in pre-mRNA splicing.

Immunogen: Synthetic peptide of human HNRNPA3

Applications: ELISA, WB, IHC

Recommended Dilutions: IHC: 50-300;WB: 500-2000;ELISA: 5000-10000

Host Species: Rabbit

Clonality: Rabbit Polyclonal

Isotype: Immunogen-specific rabbit IgG

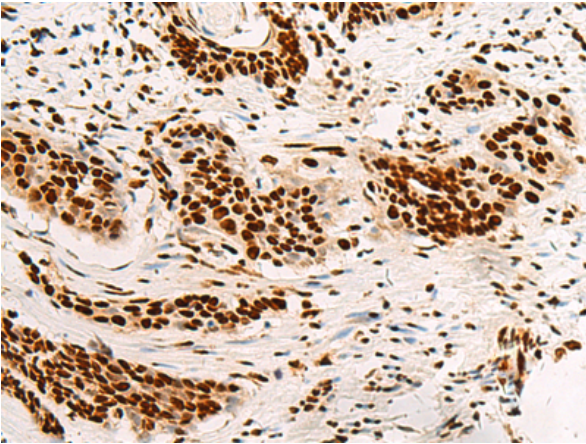
Purification: Antigen affinity purification

Species Reactivity: Human, Mouse, Rat

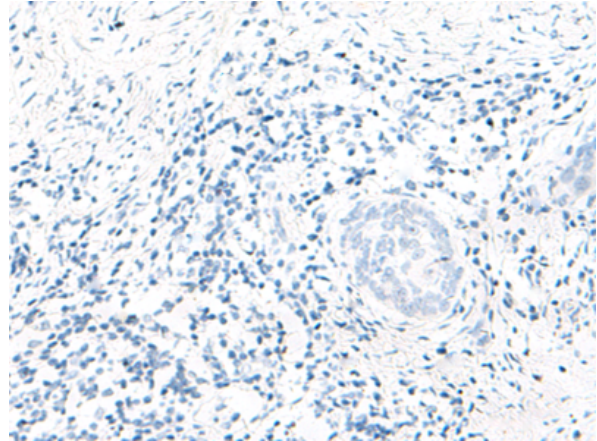
Constituents: PBS (without Mg²⁺ and Ca²⁺), pH 7.4, 150 mM NaCl, 0.05% Sodium Azide and 40% glycerol

Research Areas: Epigenetics and Nuclear Signaling

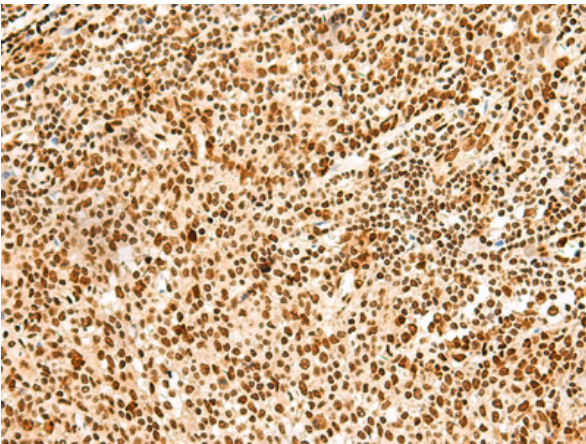
Storage & Shipping: Store at -20°C. Avoid repeated freezing and thawing



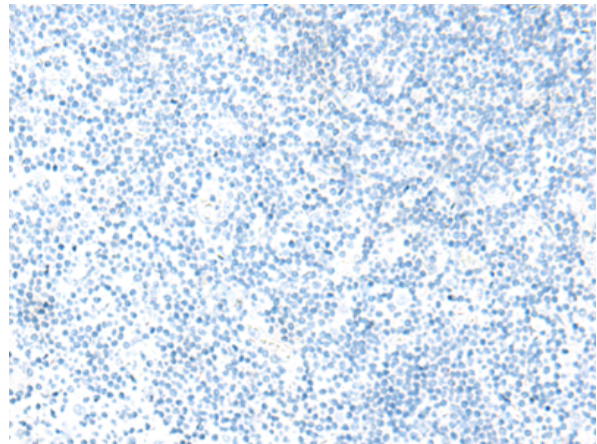
Immunohistochemistry analysis of paraffin embedded Human esophagus cancer tissue using 222192(HNRNPA3 Antibody) at a dilution of 1/45(Nucleus).



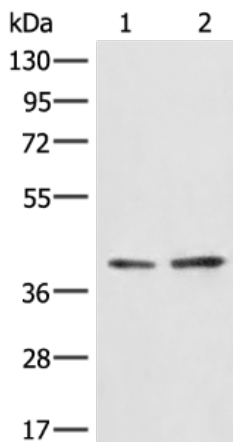
In comparison with the IHC on the left, the same paraffin-embedded Human esophagus cancer tissue is first treated with the synthetic peptide and then with 222192(Anti-HNRNPA3 Antibody) at dilution 1/45.



The image on the left is immunohistochemistry of paraffin-embedded Human tonsil tissue using 222192(Anti-HNRNPA3 Antibody) at a dilution of 1/45.



In comparison with the IHC on the left, the same paraffin-embedded Human tonsil tissue is first treated with synthetic peptide and then with D264201(Anti-HNRNPA3 Antibody) at dilution 1/45.



Gel: 8%SDS-PAGE, Lysate: 40 µg;
Lane 1-2: A172 and LO2 cell lysates;
Primary antibody: 222192(HNRNPA3 Antibody) at dilution 1/500;
Secondary antibody: Goat anti rabbit IgG at 1/8000 dilution;
Exposure time: 10 seconds



Product Description

Pioneering GTPase and Oncogene Product Development since 2010
