

HOOK1 RABBIT PAB

Cat.#: S219409

Product Name: Anti-HOOK1 Rabbit Polyclonal Antibody

Synonyms: HK1

UNIPROT ID: Q9UJC3 (Gene Accession - BC011621)

Background: This gene encodes a member of the hook family of coiled-coil proteins, which bind to microtubules and organelles through their N- and C-terminal domains, respectively. The encoded protein localizes to discrete punctuate subcellular structures, and interacts with several members of the Rab GTPase family involved in endocytosis. It is thought to link endocytic membrane trafficking to the microtubule cytoskeleton. Several alternatively spliced transcript variants have been identified, but the full-length nature of some of these variants has not been determined.

Immunogen: Fusion protein of human HOOK1

Applications: ELISA, IHC

Recommended Dilutions: IHC: 50-200; ELISA: 5000-10000

Host Species: Rabbit

Clonality: Rabbit Polyclonal

Isotype: Immunogen-specific rabbit IgG

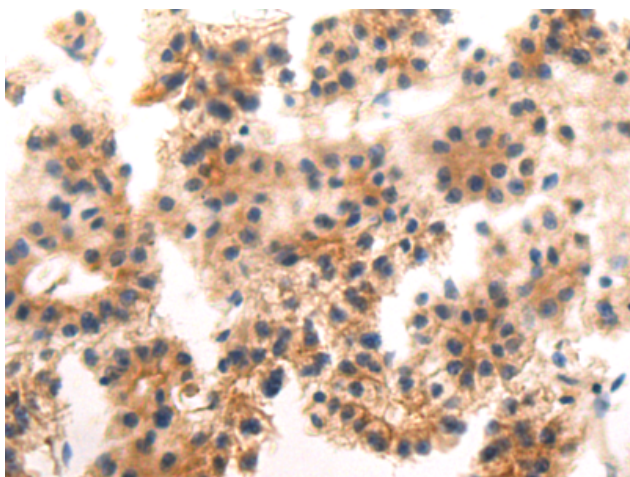
Purification: Antigen affinity purification

Species Reactivity: Human, Mouse

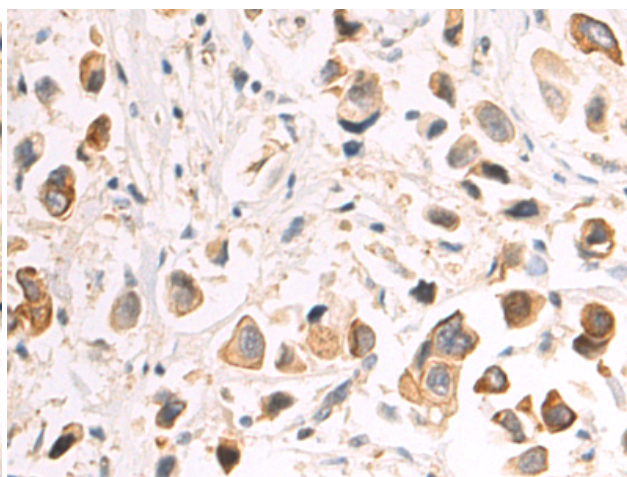
Constituents: PBS (without Mg²⁺ and Ca²⁺), pH 7.4, 150 mM NaCl, 0.05% Sodium Azide and 40% glycerol

Research Areas: Signal Transduction, Cell Biology, Cancer, Stem Cells

Storage & Shipping: Store at -20°C. Avoid repeated freezing and thawing



Immunohistochemistry analysis of paraffin-embedded Human liver cancer tissue using 219409(HOOK1 Antibody) at a dilution of 1/75(Cytoplasm).



Immunohistochemistry analysis of paraffin-embedded Human breast cancer tissue using 219409(Anti-HOOK1 Antibody) at a dilution of 1/75.