

HOOK2 RABBIT PAB

Cat.#: S218775

Product Name: Anti-HOOK2 Rabbit Polyclonal Antibody

Synonyms: HK2

UNIPROT ID: Q96ED9 (Gene Accession - BC012443)

Background: Hook proteins are cytosolic coiled-coil proteins that contain conserved N-terminal domains, which attach to microtubules, and more divergent C-terminal domains, which mediate binding to organelles. The *Drosophila* Hook protein is a component of the endocytic compartment.

Immunogen: Fusion protein of human HOOK2

Applications: ELISA, WB, IHC

Recommended Dilutions: IHC: 40-200;WB: 200-1000;ELISA: 5000-10000

Host Species: Rabbit

Clonality: Rabbit Polyclonal

Isotype: Immunogen-specific rabbit IgG

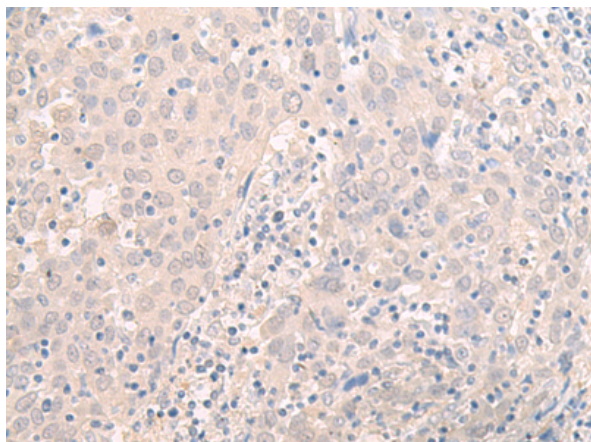
Purification: Antigen affinity purification

Species Reactivity: Human, Mouse

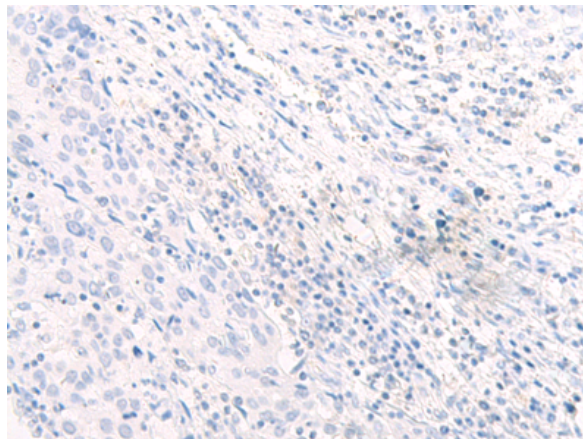
Constituents: PBS (without Mg²⁺ and Ca²⁺), pH 7.4, 150 mM NaCl, 0.05% Sodium Azide and 40% glycerol

Research Areas: Signal Transduction

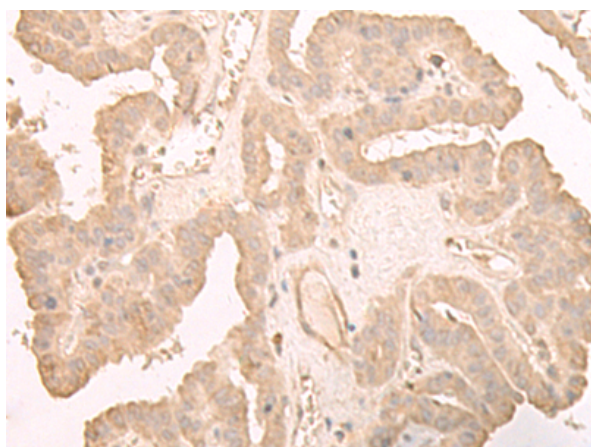
Storage & Shipping: Store at -20°C. Avoid repeated freezing and thawing



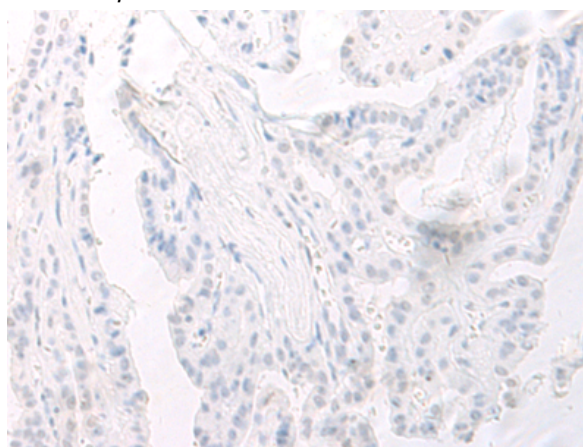
Immunohistochemistry analysis of paraffin embedded Human cervical cancer tissue using 218775(HOOK2 Antibody) at a dilution of 1/50(Cytoplasm and Nucleus).



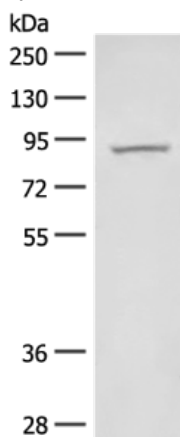
In comparison with the IHC on the left, the same paraffin-embedded Human cervical cancer tissue is first treated with the fusion protein and then with 218775(Anti-HOOK2 Antibody) at dilution 1/50.



The image on the left is immunohistochemistry of paraffin-embedded Human thyroid cancer tissue using 218775(Anti-HOOK2 Antibody) at a dilution of 1/50.



In comparison with the IHC on the left, the same paraffin-embedded Human thyroid cancer tissue is first treated with fusion protein and then with D225151(Anti-HOOK2 Antibody) at dilution 1/50.



Gel: 8%SDS-PAGE, Lysate: 40 µg;
Lane: Human fetal liver tissue lysate;
Primary antibody: 218775(HOOK2 Antibody) at dilution 1/350;
Secondary antibody: Goat anti rabbit IgG at 1/8000 dilution;
Exposure time: 10 seconds



Product Description

Pioneering GTPase and Oncogene Product Development since 2010
