

HOPX RABBIT MAB

Cat.#: N262355

Product Name: Anti-HOPX Rabbit Monoclonal Antibody

Synonyms: Hod; Hop; Ob1; Ob1; Hdop; Toto; Cameo; A1848177; AW490897; I110018K11Rik; I200015P04Rik; I2300002F06Rik

UNIPROT ID: Q8R1H0

Background: Atypical homeodomain protein which does not bind DNA and is required to modulate cardiac growth and development. Acts via its interaction with SRF, thereby modulating the expression of SRF-dependent cardiac-specific genes and cardiac development. Prevents SRF-dependent transcription either by inhibiting SRF binding to DNA or by recruiting histone deacetylase (HDAC) proteins that prevent transcription by SRF. Overexpression causes cardiac hypertrophy (PubMed:12297045, PubMed:12297046). Acts as a co-chaperone for HSPA1A and HSPA1B chaperone proteins and assists in chaperone-mediated protein refolding .

Immunogen: Recombinant protein of mouse HOPX

Applications: WB,IP

Recommended Dilutions: WB: 1/500-1/1000 IP: 1/20

Host Species: Rabbit

Clonality: Rabbit Monoclonal

Clone ID: R06-4F8

MW: Calculated MW: 8 kDa; Observed MW: 12 kDa

Isotype: IgG

Purification: Affinity Purified

Species Reactivity: Human

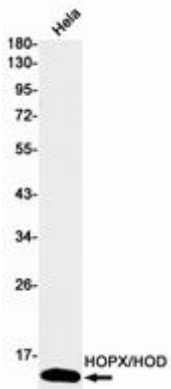
Conjugation: Unconjugated

Modification: Unmodified

Constituents: PBS (without Mg²⁺ and Ca²⁺), pH 7.3 containing 50% glycerol, 0.5% BSA and 0.02% sodium azide

Research Areas: Epigenetics and Nuclear Signaling

Storage & Shipping: Store at -20°C. Avoid repeated freezing and thawing



Western blot analysis of HOPX/HOD in HeLa lysates using HOPX antibody.