

HORMAD2 RABBIT PAB

Cat.#: S219316

Product Name: Anti-HORMAD2 Rabbit Polyclonal Antibody

Synonyms: CT46.2

UNIPROT ID: Q8N7B1 (Gene Accession - BC030013)

Background: Essential for synapsis surveillance during meiotic prophase via the recruitment of ATR activity. Plays a key role in the male mid-pachytene checkpoint and the female meiotic prophase checkpoint: required for efficient build-up of ATR activity on unsynapsed chromosome regions, a process believed to form the basis of meiotic silencing of unsynapsed chromatin (MSUC) and meiotic prophase quality control in both sexes. Required for the DNA double-strand break-independent, BRCA1-dependent activation of ATR on the sex chromosomes that is essential for normal sex body formation (By similarity).

Immunogen: Fusion protein of human HORMAD2

Applications: ELISA, IHC

Recommended Dilutions: IHC: 50-200; ELISA: 5000-10000

Host Species: Rabbit

Clonality: Rabbit Polyclonal

Isotype: Immunogen-specific rabbit IgG

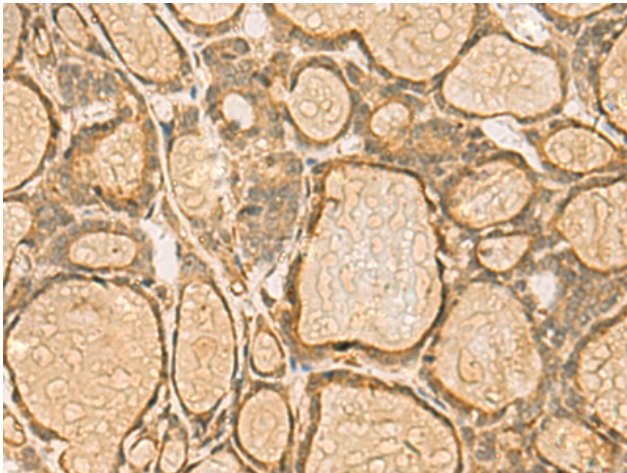
Purification: Antigen affinity purification

Species Reactivity: Human

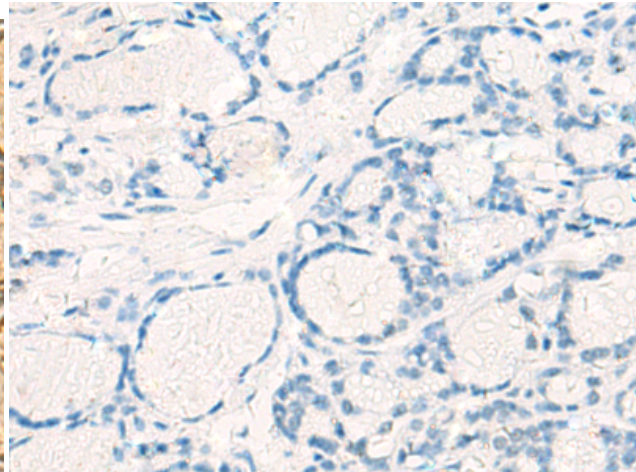
Constituents: PBS (without Mg²⁺ and Ca²⁺), pH 7.4, 150 mM NaCl, 0.05% Sodium Azide and 40% glycerol

Research Areas: Cancer, Cell Biology

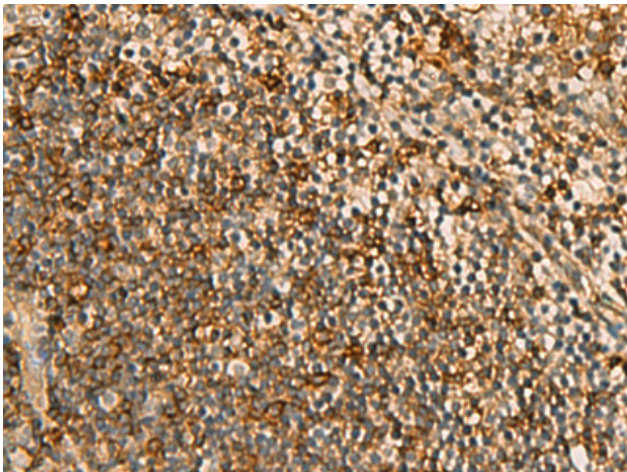
Storage & Shipping: Store at -20°C. Avoid repeated freezing and thawing



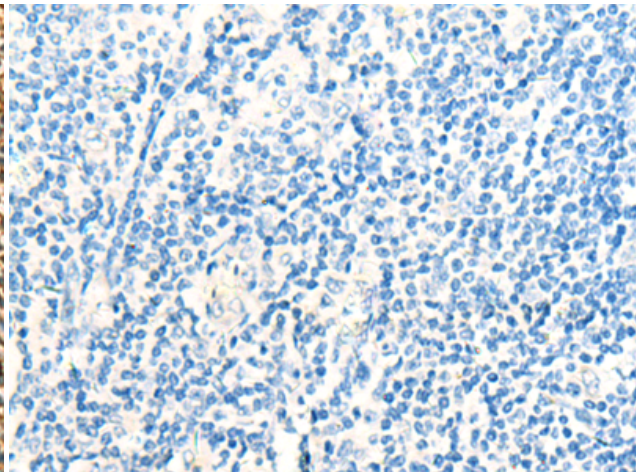
Immunohistochemistry analysis of paraffin embedded Human thyroid cancer tissue using 219316(HORMAD2 Antibody) at a dilution of 1/45(Cytoplasm).



In comparison with the IHC on the left, the same paraffin-embedded Human thyroid cancer tissue is first treated with the fusion protein and then with 219316(Anti-HORMAD2 Antibody) at dilution 1/45.



The image on the left is immunohistochemistry of paraffin-embedded Human tonsil tissue using 219316(Anti-HORMAD2 Antibody) at a dilution of 1/45.



In comparison with the IHC on the left, the same paraffin-embedded Human tonsil tissue is first treated with fusion protein and then with D226379(Anti-HORMAD2 Antibody) at dilution 1/45.