

## HORMONE SENSITIVE LIPASE RABBIT PAB

**Cat.#:** N225450

**Product Name:** Anti-Hormone Sensitive Lipase Rabbit pAb

**Synonyms:** LIPE; Hormone-sensitive lipase; HSL

**UNIPROT ID:** Q05469

**Background:** hormone sensitive lipase is a lipolytic enzyme of the 'GDXG' family. Plays a rate limiting step in triglyceride lipolysis. In adipose tissue and heart, it primarily hydrolyzes stored triglycerides to free fatty acids, while in steroidogenic tissues, it principally converts cholesteryl esters to free cholesterol for steroid hormone production.

**Immunogen:** The antiserum was produced against synthesized peptide derived from human HSL. AA range:518-567

**Applications:** WB,IHC-P,ELISA

**Recommended Dilutions:** WB: 1/500-1/1000 IHC: 1/50-1/100 ELISA: 1/10000

**Host Species:** Rabbit

**Clonality:** Rabbit Polyclonal

**Clone ID:** -

**MW:** Calculated MW: 117 kDa; Observed MW: 120 kDa

**Isotype:** IgG

**Purification:** Affinity Chromatography

**Species Reactivity:** Human,Mouse,Rat

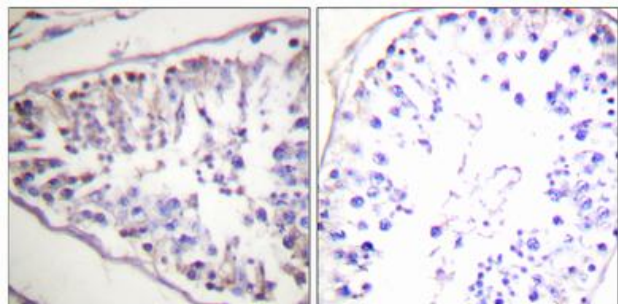
**Conjugation:** Unconjugated

**Modification:** Unmodified

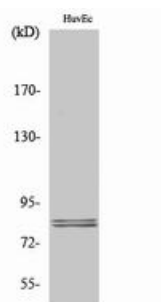
**Constituents:** PBS (without Mg<sup>2+</sup> and Ca<sup>2+</sup>), pH 7.3 containing 50% glycerol, 0.5% BSA and 0.02% sodium azide

**Research Areas:** Cardiovascular

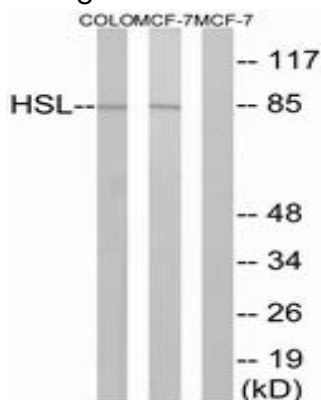
**Storage & Shipping:** Store at -20°C. Avoid repeated freezing and thawing



Immunohistochemistry analysis of paraffin-embedded Human tonsil tissue, using HSL antibody. High-pressure and temperature Sodium Citrate pH 6.0 was used for antigen retrieval. Sample with blocking peptide on the right.



Western blot analysis of Hormone Sensitive Lipase in various lysates using Hormone Sensitive Lipase antibody.



Western blot analysis of Hormone Sensitive Lipase in COLO and MCF-7 lysates using HSL antibody. The lane on the right is blocked with the synthesized peptide.