

HOXB7 RABBIT PAB

Cat.#: S215130

Product Name: Anti-HOXB7 Rabbit Polyclonal Antibody

Synonyms: HOXB7; HOXB7-AS1; HHO.C1; Hox-2.3

UNIPROT ID: P09629 (Gene Accession - NP_004493)

Background: This gene is a member of the Antp homeobox family and encodes a protein with a homeobox DNA-binding domain. It is included in a cluster of homeobox B genes located on chromosome 17. The encoded nuclear protein functions as a sequence-specific transcription factor that is involved in cell proliferation and differentiation. Increased expression of this gene is associated with some cases of melanoma and ovarian carcinoma.

Immunogen: Synthetic peptide of human HOXB7

Applications: ELISA, IHC

Recommended Dilutions: IHC: 25-100; ELISA: 5000-10000

Host Species: Rabbit

Clonality: Rabbit Polyclonal

Isotype: Immunogen-specific rabbit IgG

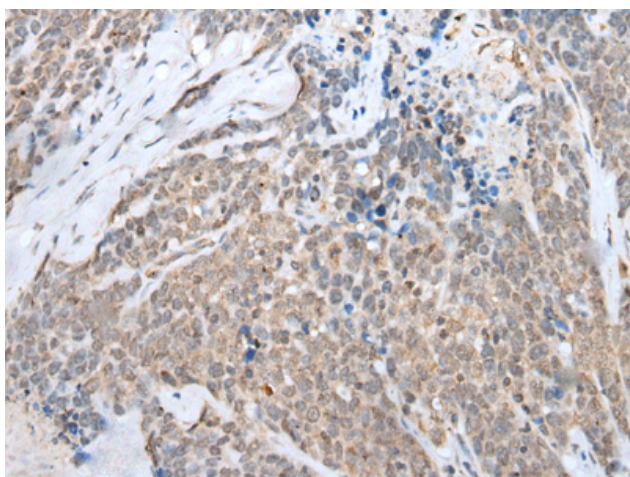
Purification: Antigen affinity purification

Species Reactivity: Human, Mouse, Rat

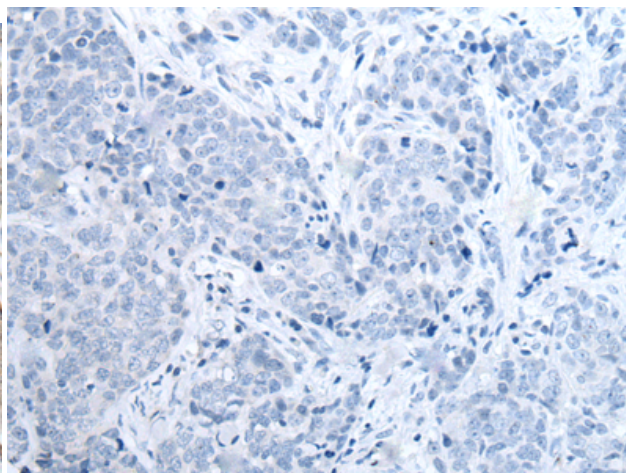
Constituents: PBS (without Mg²⁺ and Ca²⁺), pH 7.4, 150 mM NaCl, 0.05% Sodium Azide and 40% glycerol

Research Areas: Epigenetics and Nuclear Signaling

Storage & Shipping: Store at -20°C. Avoid repeated freezing and thawing



Immunohistochemistry analysis of paraffin embedded Human thyroid cancer tissue using 215130(HOXB7 Antibody) at a dilution of 1/25(Nucleus and Cytoplasm).



In comparison with the IHC on the left, the same paraffin-embedded Human thyroid cancer tissue is first treated with the synthetic peptide and then with 215130(Anti-HOXB7 Antibody) at dilution 1/25.