

## HOXB9 RABBIT PAB

**Cat.#:** S221406

**Product Name:** Anti-HOXB9 Rabbit Polyclonal Antibody

**Synonyms:** HOX2; HOX2E; HOX-2.5

**UNIPROT ID:** P17482 (Gene Accession - NP\_076922 )

**Background:** This gene is a member of the Abd-B homeobox family and encodes a protein with a homeobox DNA-binding domain. It is included in a cluster of homeobox B genes located on chromosome 17. The encoded nuclear protein functions as a sequence-specific transcription factor that is involved in cell proliferation and differentiation. Increased expression of this gene is associated with some cases of leukemia, prostate cancer and lung cancer.

**Immunogen:** Synthetic peptide of human HOXB9

**Applications:** ELISA, IHC

**Recommended Dilutions:** IHC: 25-100; ELISA: 5000-10000

**Host Species:** Rabbit

**Clonality:** Rabbit Polyclonal

**Isotype:** Immunogen-specific rabbit IgG

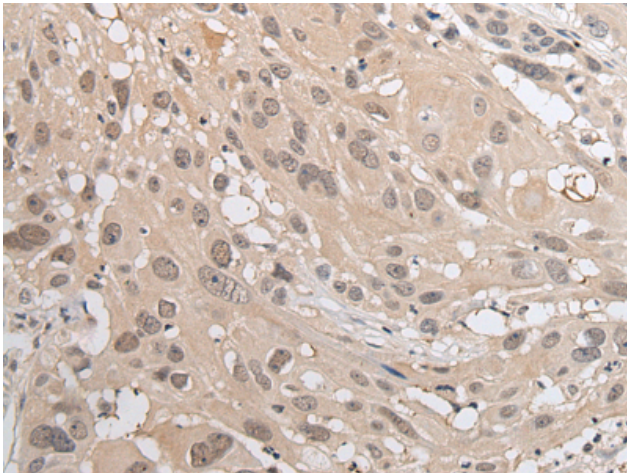
**Purification:** Antigen affinity purification

**Species Reactivity:** Human, Mouse

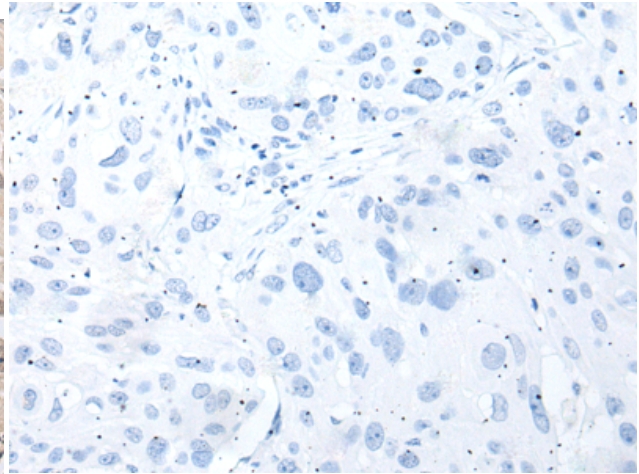
**Constituents:** PBS (without Mg<sup>2+</sup> and Ca<sup>2+</sup>), pH 7.4, 150 mM NaCl, 0.05% Sodium Azide and 40% glycerol

**Research Areas:** Epigenetics and Nuclear Signaling

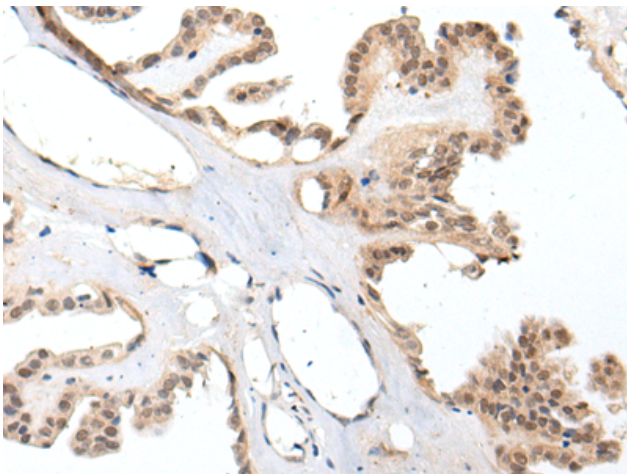
**Storage & Shipping:** Store at -20°C. Avoid repeated freezing and thawing



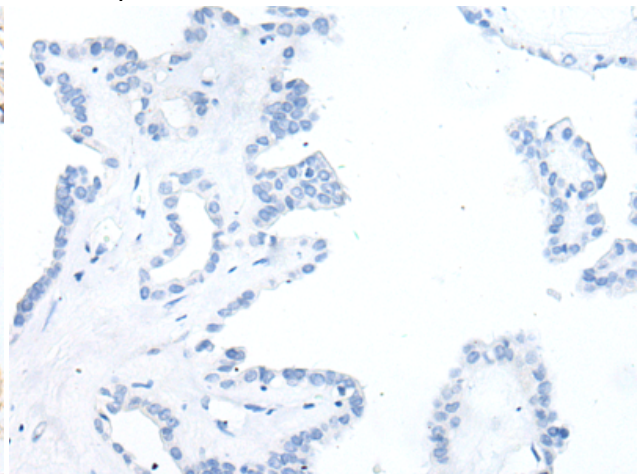
Immunohistochemistry analysis of paraffin embedded Human esophagus cancer tissue using 221406 (HOXB9 Antibody) at a dilution of 1/25 (Nucleus and Cytoplasm).



In comparison with the IHC on the left, the same paraffin-embedded Human esophagus cancer tissue is first treated with the synthetic peptide and then with 221406 (Anti-HOXB9 Antibody) at dilution 1/25.



The image on the left is immunohistochemistry of paraffin-embedded Human thyroid cancer tissue using 221406 (Anti-HOXB9 Antibody) at a dilution of 1/25.



In comparison with the IHC on the left, the same paraffin-embedded Human thyroid cancer tissue is first treated with synthetic peptide and then with D262979 (Anti-HOXB9 Antibody) at dilution 1/25.