

HOXD1 RABBIT PAB

Cat.#: S221473

Product Name: Anti-HOXD1 Rabbit Polyclonal Antibody

Synonyms: HOX4; HOX4G; Hox-4.7

UNIPROT ID: Q9GZZ0 (Gene Accession - NP_078777)

Background: This gene is a member of the Antp homeobox family and encodes a protein with a homeobox DNA-binding domain. This nuclear protein functions as a sequence-specific transcription factor that is involved in differentiation and limb development. Mutations in this gene have been associated with severe developmental defects on the anterior-posterior (a-p) limb axis.

Immunogen: Synthetic peptide of human HOXD1

Applications: ELISA, IHC

Recommended Dilutions: IHC: 25-100; ELISA: 5000-10000

Host Species: Rabbit

Clonality: Rabbit Polyclonal

Isotype: Immunogen-specific rabbit IgG

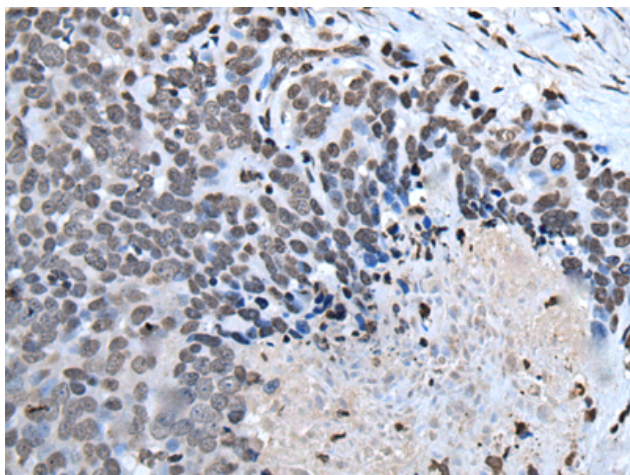
Purification: Antigen affinity purification

Species Reactivity: Human, Mouse

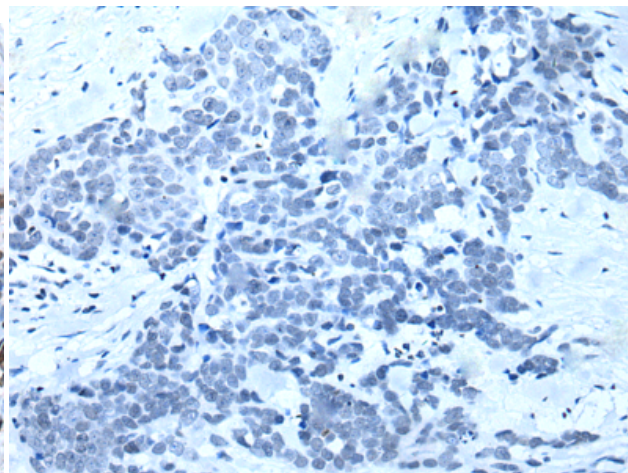
Constituents: PBS (without Mg²⁺ and Ca²⁺), pH 7.4, 150 mM NaCl, 0.05% Sodium Azide and 40% glycerol

Research Areas: Epigenetics and Nuclear Signaling

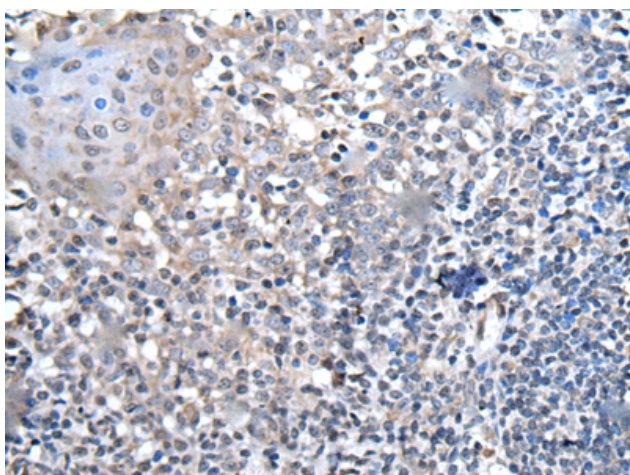
Storage & Shipping: Store at -20°C. Avoid repeated freezing and thawing



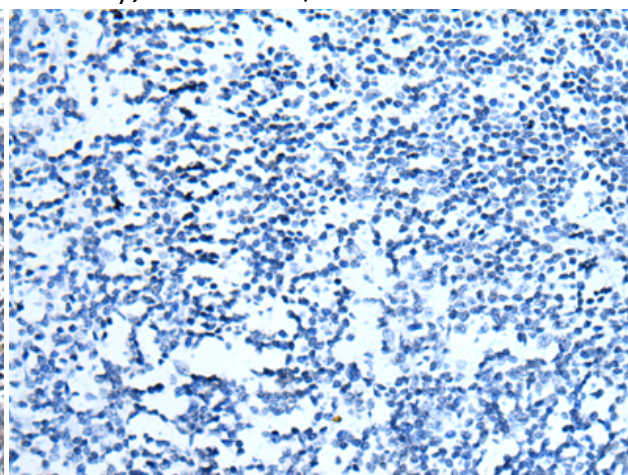
Immunohistochemistry analysis of paraffin embedded Human thyroid cancer tissue using 221473 (HOXD1 Antibody) at a dilution of 1/25 (Nucleus).



In comparison with the IHC on the left, the same paraffin-embedded Human thyroid cancer tissue is first treated with the synthetic peptide and then with 221473 (Anti-HOXD1 Antibody) at dilution 1/25.



The image on the left is immunohistochemistry of paraffin-embedded Human tonsil tissue using 221473 (Anti-HOXD1 Antibody) at a dilution of 1/25.



In comparison with the IHC on the left, the same paraffin-embedded Human tonsil tissue is first treated with synthetic peptide and then with D263082 (Anti-HOXD1 Antibody) at dilution 1/25.