

HOXD10 RABBIT PAB

Cat.#: S221370

Product Name: Anti-HOXD10 Rabbit Polyclonal Antibody

Synonyms: HOX4; HOX4D; HOX4E; Hox-4.4

UNIPROT ID: P28358 (Gene Accession - NP_002139)

Background:

Immunogen: Synthetic peptide of human HOXD10

Applications: ELISA, IHC

Recommended Dilutions: IHC: 25-100; ELISA: 5000-10000

Host Species: Rabbit

Clonality: Rabbit Polyclonal

Isotype: Immunogen-specific rabbit IgG

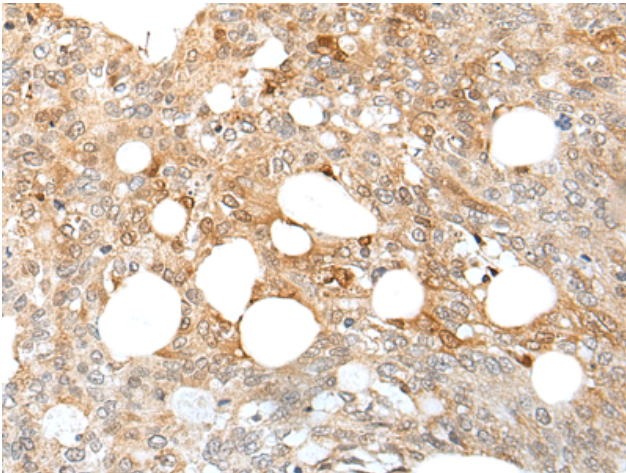
Purification: Antigen affinity purification

Species Reactivity: Human, Mouse

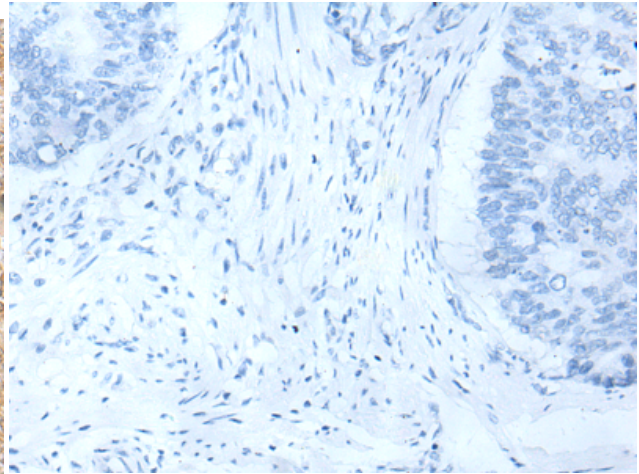
Constituents: PBS (without Mg²⁺ and Ca²⁺), pH 7.4, 150 mM NaCl, 0.05% Sodium Azide and 40% glycerol

Research Areas: Epigenetics and Nuclear Signaling

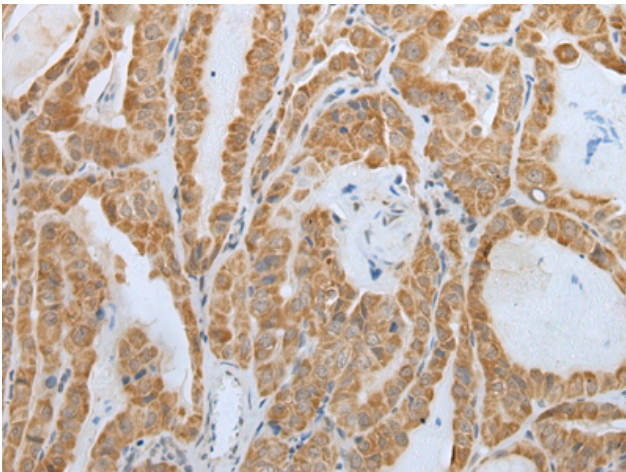
Storage & Shipping: Store at -20°C. Avoid repeated freezing and thawing



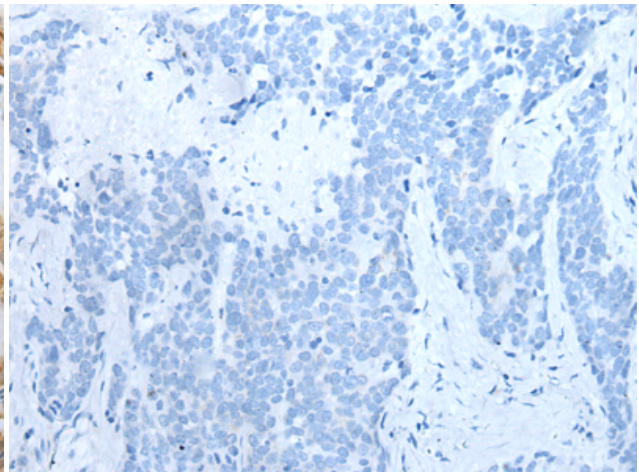
Immunohistochemistry analysis of paraffin embedded Human colorectal cancer tissue using 221370 (HOXD10 Antibody) at a dilution of 1/35 (Nucleus).



In comparison with the IHC on the left, the same paraffin-embedded Human colorectal cancer tissue is first treated with the synthetic peptide and then with 221370 (Anti-HOXD10 Antibody) at dilution 1/35.



The image on the left is immunohistochemistry of paraffin-embedded Human thyroid cancer tissue using 221370 (Anti-HOXD10 Antibody) at a dilution of 1/35.



In comparison with the IHC on the left, the same paraffin-embedded Human thyroid cancer tissue is first treated with synthetic peptide and then with D262929 (Anti-HOXD10 Antibody) at dilution 1/35.