

HP1 ALPHA RABBIT MAB

Cat.#: N262357

Product Name: Anti-HP1 alpha Rabbit Monoclonal Antibody

Synonyms: CBX5; HP1A; Chromobox protein homolog 5; Antigen p25; Heterochromatin protein 1 homolog alpha; HP1 alpha

UNIPROT ID: P45973

Background: Component of heterochromatin that recognizes and binds histone H3 tails methylated at 'Lys-9' (H3K9me), leading to epigenetic repression. In contrast, it is excluded from chromatin when 'Tyr-41' of histone H3 is phosphorylated (H3Y41ph). Can interact with lamin-B receptor (LBR). This interaction can contribute to the association of the heterochromatin with the inner nuclear membrane. Involved in the formation of functional kinetochore through interaction with MIS12 complex proteins.

Immunogen: A synthetic peptide of human HP1 alpha

Applications: WB,IHC-F,IHC-P,ICC/IF,IP

Recommended Dilutions: WB: 1/500-1/1000 IHC: 1/50-1/100 IF: 1/50-1/200 IP: 1/20

Host Species: Rabbit

Clonality: Rabbit Monoclonal

Clone ID: R09-9D5

MW: Calculated MW: 22 kDa; Observed MW: 22 kDa

Isotype: IgG

Purification: Affinity Purified

Species Reactivity: Human,Mouse,Rat

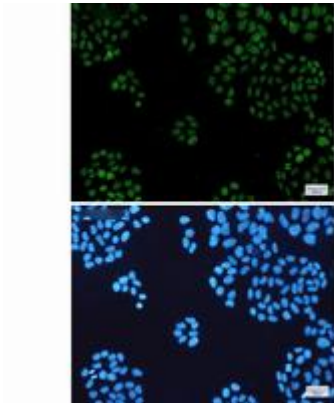
Conjugation: Unconjugated

Modification: Unmodified

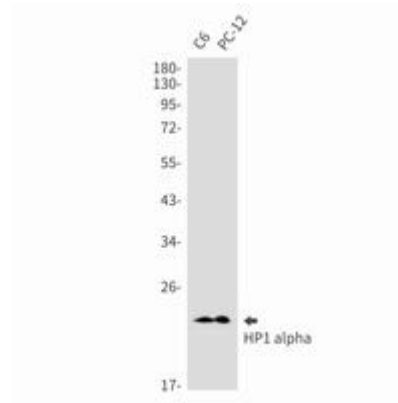
Constituents: PBS (without Mg²⁺ and Ca²⁺), pH 7.3 containing 50% glycerol, 0.5% BSA and 0.02% sodium azide

Research Areas: Epigenetics and Nuclear Signaling

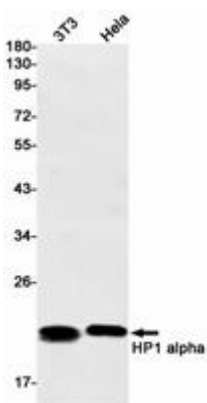
Storage & Shipping: Store at -20°C. Avoid repeated freezing and thawing



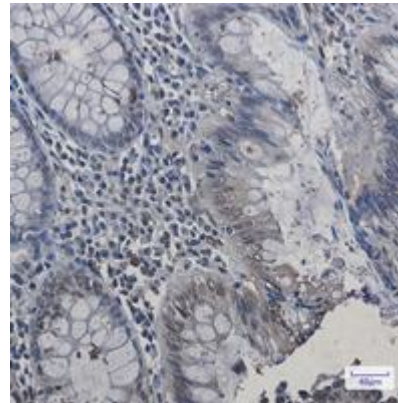
Immunocytochemistry analysis of HP1 alpha (green) in HeLa using HP1 alpha antibody, and DAPI (blue)



Western blot analysis of HP1 alpha in C6, PC-12 lysates using HP1 alpha antibody.



Western blot analysis of HP1 alpha in 3T3, HeLa lysates using HP1 alpha antibody.



Immunohistochemistry analysis of paraffin-embedded Human colon cancer using HP1 alpha antibody. High-pressure and temperature Sodium Citrate pH 6.0 was used for antigen retrieval.