

## HP1 GAMMA (5G10) MOUSE MAB

**Cat.#:** N261398

**Product Name:** Anti-HP1 gamma (5G10) Mouse Monoclonal Antibody

**Synonyms:** CBX3; Chromobox protein homolog 3; HECH; Heterochromatin protein 1 homolog gamma; HP1 gamma; Modifier 2 protein

**UNIPROT ID:** Q13185

**Background:** Recognizes and binds histone H3 tails methylated at 'Lys-9', leading to epigenetic repression. May contribute to the association of the heterochromatin with the inner nuclear membrane through its interaction with lamin B receptor (LBR). Involved in the formation of functional kinetochore through interaction with MIS12 complex proteins.

**Immunogen:** Purified recombinant human HP1-gamma protein fragments expressed in E.coli.

**Applications:** WB,IHC-F,IHC-P,ICC/IF,IP

**Recommended Dilutions:** WB: 1/500-1/1000 IHC: 1/50-1/100 IF: 1/50-1/200 IP: 1/20

**Host Species:** Mouse

**Clonality:** Mouse Monoclonal

**Clone ID:** 5G10-F7-A12

**MW:** Calculated MW: 21 kDa; Observed MW: 21 kDa

**Isotype:** IgG1

**Purification:** Affinity Purified

**Species Reactivity:** Mouse,Human,Monkey,Hamster,Rat

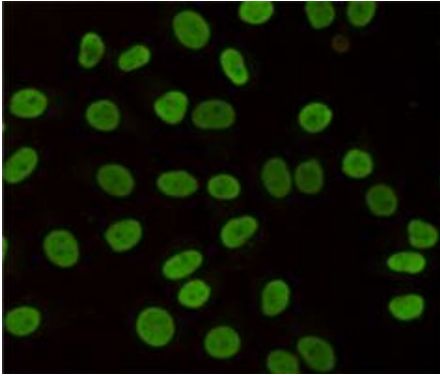
**Conjugation:** Unconjugated

**Modification:** Unmodified

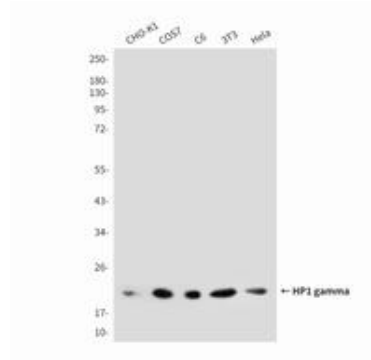
**Constituents:** PBS (without Mg<sup>2+</sup> and Ca<sup>2+</sup>), pH 7.3 containing 50% glycerol, 0.5% BSA and 0.02% sodium azide

**Research Areas:** Epigenetics and Nuclear Signaling

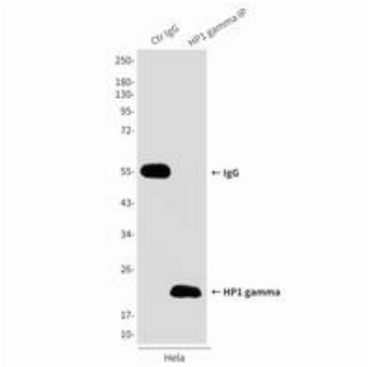
**Storage & Shipping:** Store at -20°C. Avoid repeated freezing and thawing



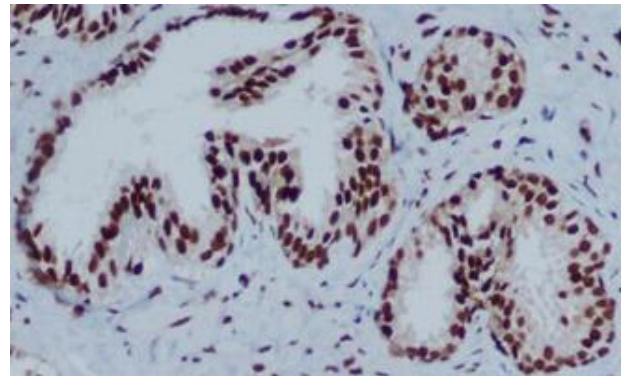
Immunocytochemistry analysis of HPI gamma (5G10) in HeLa using HPI gamma antibody.



Western blot analysis of HPI gamma in HeLa, 3T3, C6, COS7 and CHO-K1 lysates using HPI gamma antibody.



Immunoprecipitation analysis of HPI gamma (5G10) in HeLa lysates using HPI gamma antibody.



Immunohistochemistry analysis of paraffin-embedded Prostate Cancer using HPI gamma antibody. High-pressure and temperature Sodium Citrate pH 6.0 was used for antigen retrieval.