

## HPDL RABBIT MAB

**Cat.#:** N262360

**Product Name:** Anti-HPDL Rabbit Monoclonal Antibody

**Synonyms:** 4-hydroxyphenylpyruvate dioxygenase like; GLOXD1; 4-HPPD-L

**UNIPROT ID:** Q96IR7

**Background:** May have dioxygenase activity.

**Immunogen:** A synthetic peptide of human HPDL

**Applications:** WB,IP

**Recommended Dilutions:** WB: 1/500-1/1000 IP: 1/20

**Host Species:** Rabbit

**Clonality:** Rabbit Monoclonal

**Clone ID:** R08-5K5

**MW:** Calculated MW: 39 kDa; Observed MW: 39 kDa

**Isotype:** IgG

**Purification:** Affinity Purified

**Species Reactivity:** Human

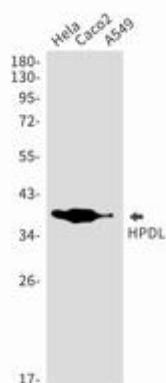
**Conjugation:** Unconjugated

**Modification:** Unmodified

**Constituents:** PBS (without Mg<sup>2+</sup> and Ca<sup>2+</sup>), pH 7.3 containing 50% glycerol, 0.5% BSA and 0.02% sodium azide

**Research Areas:** Signal Transduction

**Storage & Shipping:** Store at -20°C. Avoid repeated freezing and thawing



Western blot analysis of HPDL in Hela, Caco2, A549 lysates using HPDL antibody.