

HPDL RABBIT PAB

Cat.#: S215972

Product Name: Anti-HPDL Rabbit Polyclonal Antibody

Synonyms: GLOXD1; 4-HPPD-L

UNIPROT ID: Q96IR7 (Gene Accession - NP_116145)

Background: May have dioxygenase activity.

Immunogen: Synthetic peptide of human HPDL

Applications: ELISA, IHC

Recommended Dilutions: IHC: 25-100; ELISA: 5000-10000

Host Species: Rabbit

Clonality: Rabbit Polyclonal

Isotype: Immunogen-specific rabbit IgG

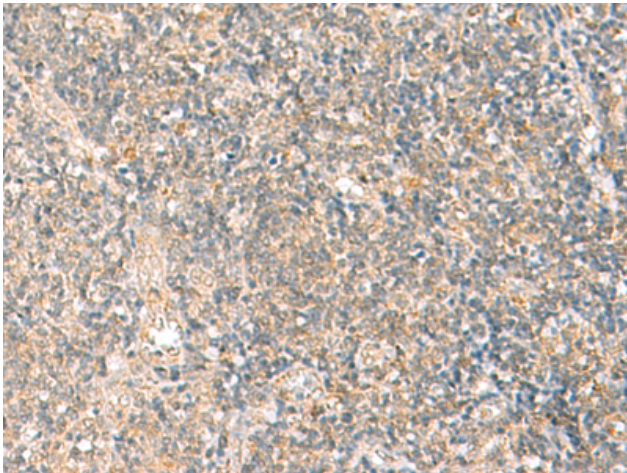
Purification: Antigen affinity purification

Species Reactivity: Human

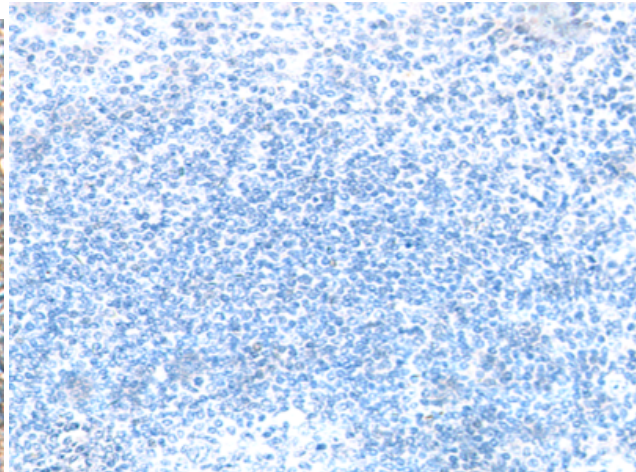
Constituents: PBS (without Mg²⁺ and Ca²⁺), pH 7.4, 150 mM NaCl, 0.05% Sodium Azide and 40% glycerol

Research Areas: Metabolism

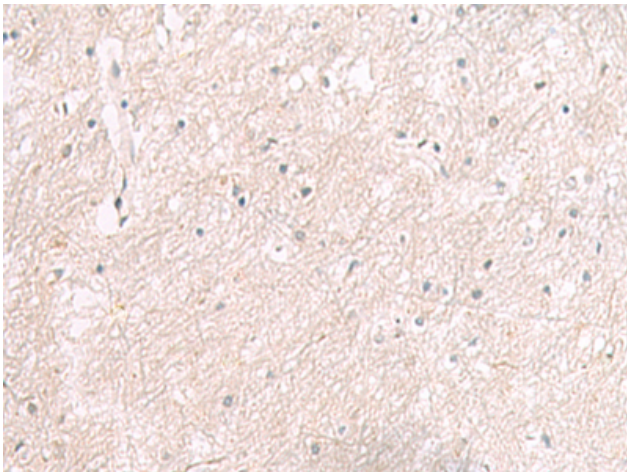
Storage & Shipping: Store at -20°C. Avoid repeated freezing and thawing



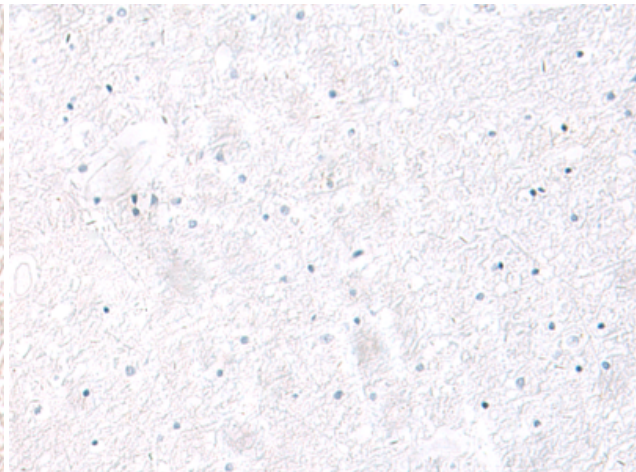
Immunohistochemistry analysis of paraffin embedded Human tonsil tissue using 215972(HPDL Antibody) at a dilution of 1/20(Cytoplasm).



In comparison with the IHC on the left, the same paraffin-embedded Human tonsil tissue is first treated with the synthetic peptide and then with 215972(Anti-HPDL Antibody) at dilution 1/20.



The image on the left is immunohistochemistry of paraffin-embedded Human brain tissue using 215972(Anti-HPDL Antibody) at a dilution of 1/20.



In comparison with the IHC on the left, the same paraffin-embedded Human brain tissue is first treated with synthetic peptide and then with D164214(Anti-HPDL Antibody) at dilution 1/20.