

## HS1BP3 RABBIT PAB

**Cat.#:** S219015

**Product Name:** Anti-HS1BP3 Rabbit Polyclonal Antibody

**Synonyms:** ETM2; HSI-BP3

**UNIPROT ID:** Q53T59 (Gene Accession - BC050636 )

**Background:** The protein encoded by this gene shares similarity with mouse Hs1bp3, an Hcls1/Hs1-interacting protein that may be involved in lymphocyte activation.

**Immunogen:** Fusion protein of human HS1BP3

**Applications:** ELISA, WB, IHC

**Recommended Dilutions:** IHC: 150-300;WB: 500-2000;ELISA: 5000-10000

**Host Species:** Rabbit

**Clonality:** Rabbit Polyclonal

**Isotype:** Immunogen-specific rabbit IgG

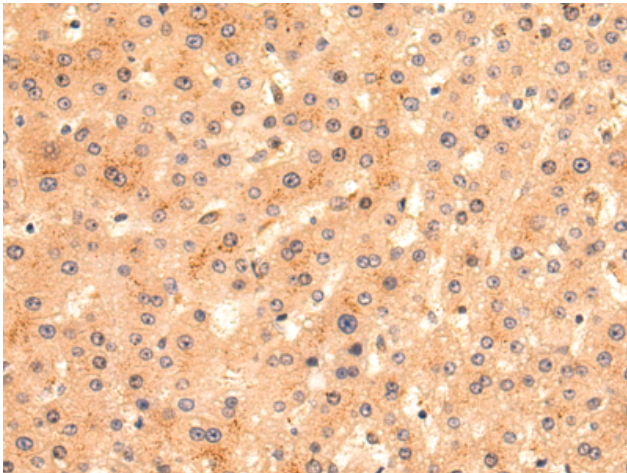
**Purification:** Antigen affinity purification

**Species Reactivity:** Human, Mouse

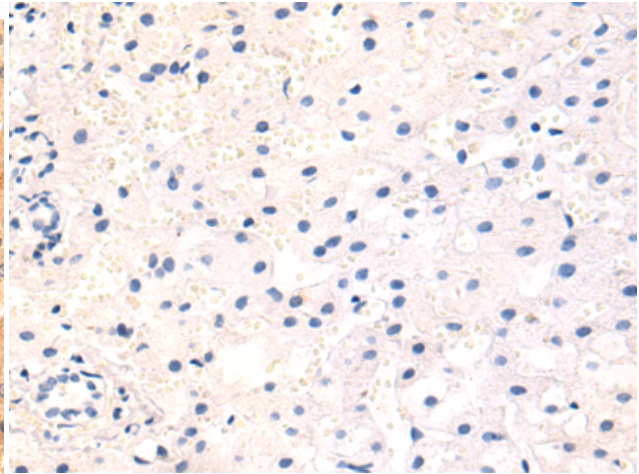
**Constituents:** PBS (without Mg<sup>2+</sup> and Ca<sup>2+</sup>), pH 7.4, 150 mM NaCl, 0.05% Sodium Azide and 40% glycerol

**Research Areas:** Signal Transduction, Neuroscience

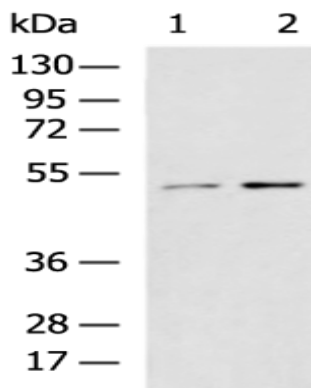
**Storage & Shipping:** Store at -20°C. Avoid repeated freezing and thawing



Immunohistochemistry analysis of paraffin embedded Human liver cancer tissue using 219015(HS1BP3 Antibody) at a dilution of 1/140(Cytoplasm).



In comparison with the IHC on the left, the same paraffin-embedded Human liver cancer tissue is first treated with the fusion protein and then with 219015(Anti-HS1BP3 Antibody) at dilution 1/140.



Gel: 8%SDS-PAGE, Lysate: 40 µg;  
Lane 1-2: A549 and NIH/3T3 cell lysates;  
Primary antibody: 219015(HS1BP3 Antibody) at dilution 1/1000;  
Secondary antibody: HRP-conjugated Goat anti rabbit IgG at 1/5000 dilution;  
Exposure time: 1 minute