

HSD17B2 RABBIT PAB

Cat.#: S217515

Product Name: Anti-HSD17B2 Rabbit Polyclonal Antibody

Synonyms: HSD17; SDR9C2; EDH17B2

UNIPROT ID: P37059 (Gene Accession - BC009581)

Background: Estradiol 17-beta-dehydrogenase 2 is an enzyme that in humans is encoded by the HSD17B2 gene. Capable of catalyzing the interconversion of testosterone and androstenedione, as well as estradiol and estrone. Also has 20-alpha-HSD activity. Uses NADH while EDH17B3 uses NADPH.

Immunogen: Fusion protein of human HSD17B2

Applications: ELISA, IHC

Recommended Dilutions: IHC: 50-200; ELISA: 2000-5000

Host Species: Rabbit

Clonality: Rabbit Polyclonal

Isotype: Immunogen-specific rabbit IgG

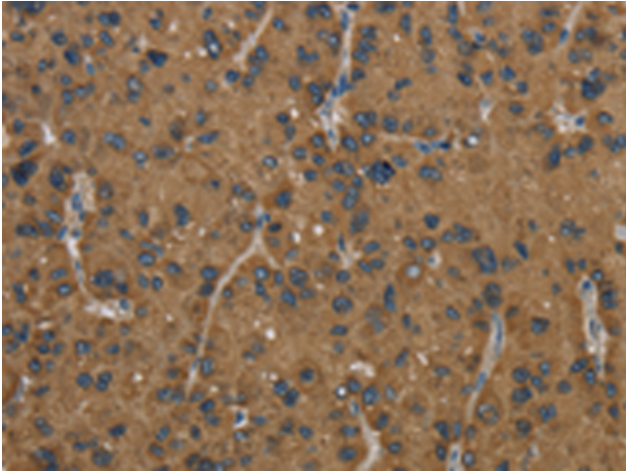
Purification: Antigen affinity purification

Species Reactivity: Human

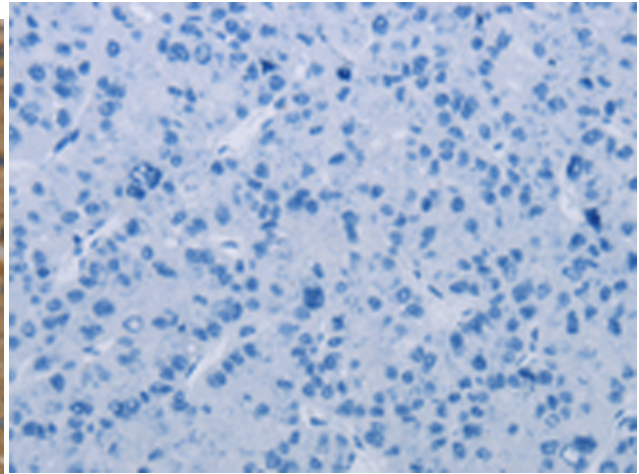
Constituents: PBS (without Mg²⁺ and Ca²⁺), pH 7.4, 150 mM NaCl, 0.05% Sodium Azide and 40% glycerol

Research Areas: Signal Transduction, Cancer

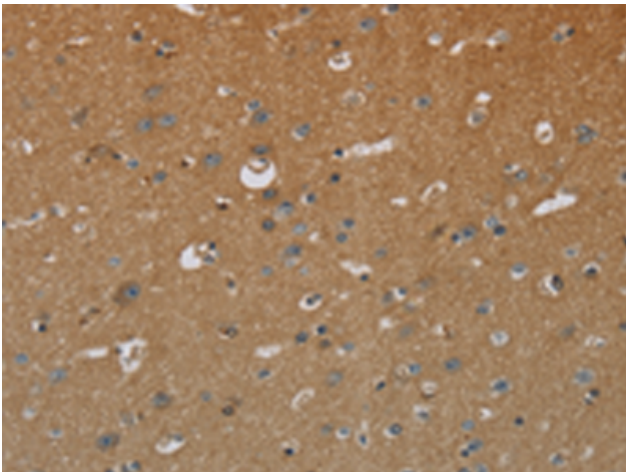
Storage & Shipping: Store at -20°C. Avoid repeated freezing and thawing



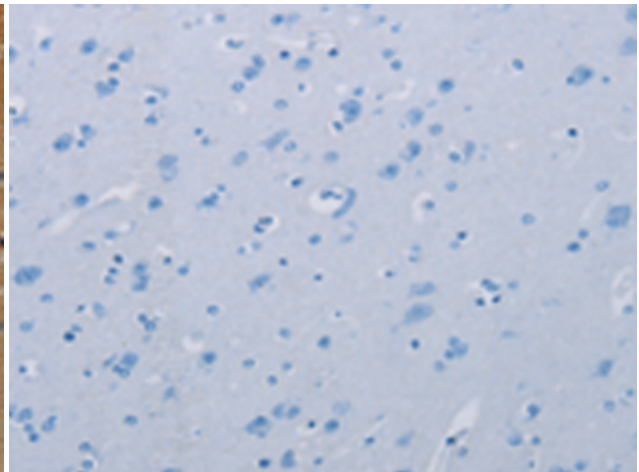
Immunohistochemistry analysis of paraffin embedded Human liver cancer tissue using 217515(HSD17B2 Antibody) at a dilution of 1/50(Cytoplasm).



In comparison with the IHC on the left, the same paraffin-embedded Human liver cancer tissue is first treated with the fusion protein and then with 217515(Anti-HSD17B2 Antibody) at dilution 1/50.



The image on the left is immunohistochemistry of paraffin-embedded Human brain tissue using 217515(Anti-HSD17B2 Antibody) at a dilution of 1/50.



In comparison with the IHC on the left, the same paraffin-embedded Human brain tissue is first treated with fusion protein and then with D222504(Anti-HSD17B2 Antibody) at dilution 1/50.