

## HSD17B8 RABBIT PAB

**Cat.#:** S217513

**Product Name:** Anti-HSD17B8 Rabbit Polyclonal Antibody

**Synonyms:** KE6; FABG; HKE6; FABGL; RING2; H2-KE6; SDR30C1; D6S2245E; dJ1033B10.9

**UNIPROT ID:** Q92506 (Gene Accession - BC008185 )

**Background:** In mice, the Ke6 protein is a 17-beta-hydroxysteroid dehydrogenase that can regulate the concentration of biologically active estrogens and androgens. It is preferentially an oxidative enzyme and inactivates estradiol, testosterone, and dihydrotestosterone. However, the enzyme has some reductive activity and can synthesize estradiol from estrone. The protein encoded by this gene is similar to Ke6 and is a member of the short-chain dehydrogenase superfamily. An alternatively spliced transcript of this gene has been detected, but the full-length nature of this variant has not been determined.

**Immunogen:** Fusion protein of human HSD17B8

**Applications:** ELISA, WB, IHC

**Recommended Dilutions:** IHC: 50-200;WB: 500-2000;ELISA: 2000-5000

**Host Species:** Rabbit

**Clonality:** Rabbit Polyclonal

**Isotype:** Immunogen-specific rabbit IgG

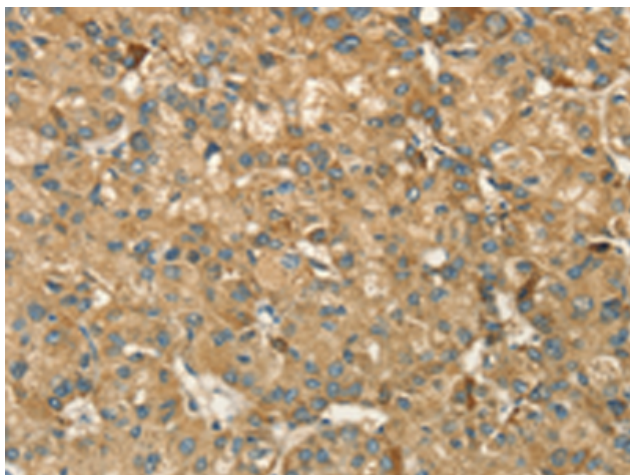
**Purification:** Antigen affinity purification

**Species Reactivity:** Human, Mouse, Rat

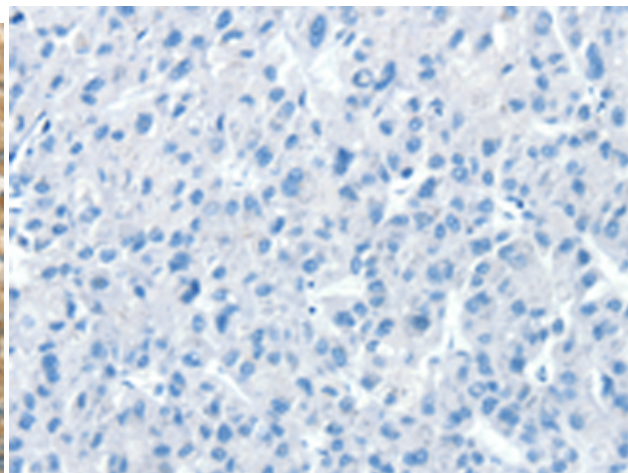
**Constituents:** PBS (without Mg<sup>2+</sup> and Ca<sup>2+</sup>), pH 7.4, 150 mM NaCl, 0.05% Sodium Azide and 40% glycerol

**Research Areas:** Signal Transduction, Neuroscience

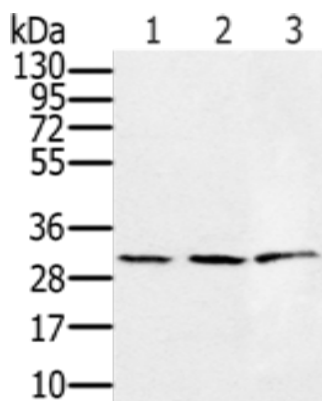
**Storage & Shipping:** Store at -20°C. Avoid repeated freezing and thawing



Immunohistochemistry analysis of paraffin embedded Human liver cancer tissue using 217513(HSD17B8 Antibody) at a dilution of 1/55(Cytoplasm).



In comparison with the IHC on the left, the same paraffin-embedded Human liver cancer tissue is first treated with the fusion protein and then with 217513(Anti-HSD17B8 Antibody) at dilution 1/55.



Gel: 12%SDS-PAGE, Lysate: 40 µg;  
 Lane 1-3: 293T cells, K562 cells, human fetal liver tissue;  
 Primary antibody: 217513(HSD17B8 Antibody) at dilution 1/450;  
 Secondary antibody: Goat anti rabbit IgG at 1/8000 dilution;  
 Exposure time: 20 seconds