

HSDL2 RABBIT PAB

Cat.#: S219340

Product Name: Anti-HSDL2 Rabbit Polyclonal Antibody

Synonyms: C9orf99; SDR13C1

UNIPROT ID: Q6YN16 (Gene Accession - BC004331)

Background: Has apparently no steroid dehydrogenase activity.

Immunogen: Fusion protein of human HSDL2

Applications: ELISA, WB, IHC

Recommended Dilutions: IHC: 50-100;WB: 1000-5000;ELISA: 5000-10000

Host Species: Rabbit

Clonality: Rabbit Polyclonal

Isotype: Immunogen-specific rabbit IgG

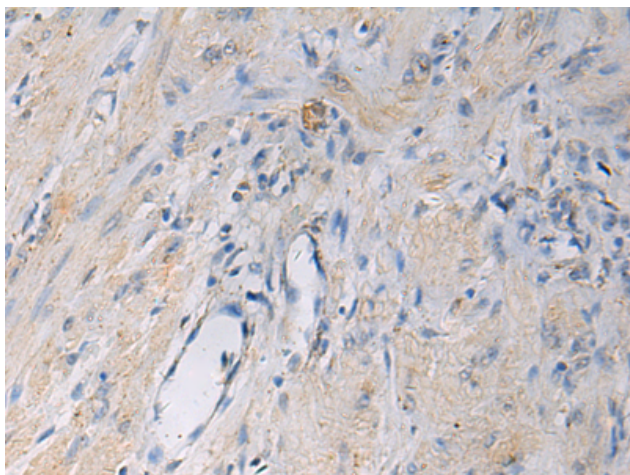
Purification: Antigen affinity purification

Species Reactivity: Human

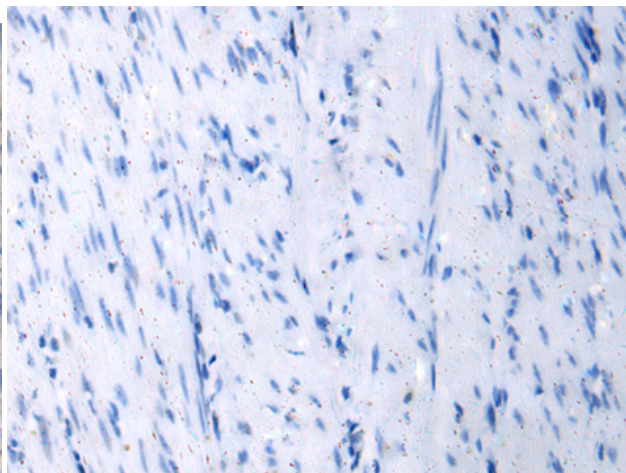
Constituents: PBS (without Mg²⁺ and Ca²⁺), pH 7.4, 150 mM NaCl, 0.05% Sodium Azide and 40% glycerol

Research Areas: Metabolism

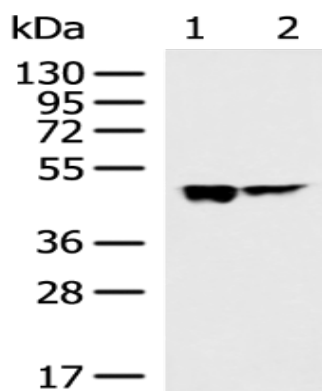
Storage & Shipping: Store at -20°C. Avoid repeated freezing and thawing



Immunohistochemistry analysis of paraffin embedded Human gastric cancer tissue using 219340(HSDL2 Antibody) at a dilution of 1/55(Cytoplasm).



In comparison with the IHC on the left, the same paraffin-embedded Human gastric cancer tissue is first treated with the fusion protein and then with 219340(Anti-HSDL2 Antibody) at dilution 1/55.



Gel: 8%SDS-PAGE, Lysate: 40 μ g;
 Lane 1-2: 293T and HeLa cell lysates;
 Primary antibody: 219340(HSDL2 Antibody) at dilution 1/1000;
 Secondary antibody: HRP-conjugated Goat anti rabbit IgG at 1/5000 dilution;
 Exposure time: 1 minute