

HSPB1 RABBIT PAB

Cat.#: S221434

Product Name: Anti-HSPB1 Rabbit Polyclonal Antibody

Synonyms: CMT2F; HMN2B; HSP27; HSP28; Hsp25; SRP27; HS.76067; HEL-S-102

UNIPROT ID: P04792 (Gene Accession - NP_001531)

Background: The protein encoded by this gene is induced by environmental stress and developmental changes. The encoded protein is involved in stress resistance and actin organization and translocates from the cytoplasm to the nucleus upon stress induction. Defects in this gene are a cause of Charcot-Marie-Tooth disease type 2F (CMT2F) and distal hereditary motor neuropathy (dHMN).

Immunogen: Synthetic peptide of human HSPB1

Applications: ELISA, WB, IHC

Recommended Dilutions: IHC: 25-100;WB: 500-2000;ELISA: 5000-10000

Host Species: Rabbit

Clonality: Rabbit Polyclonal

Isotype: Immunogen-specific rabbit IgG

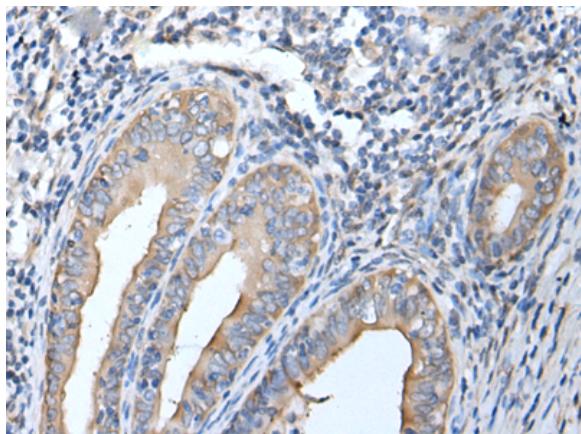
Purification: Antigen affinity purification

Species Reactivity: Human

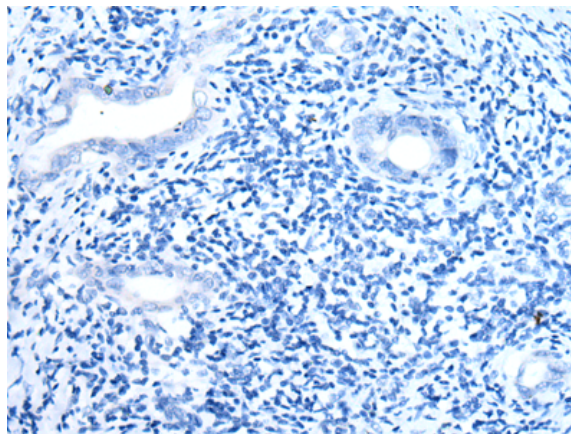
Constituents: PBS (without Mg²⁺ and Ca²⁺), pH 7.4, 150 mM NaCl, 0.05% Sodium Azide and 40% glycerol

Research Areas: Signal Transduction, Cancer, Cardiovascular

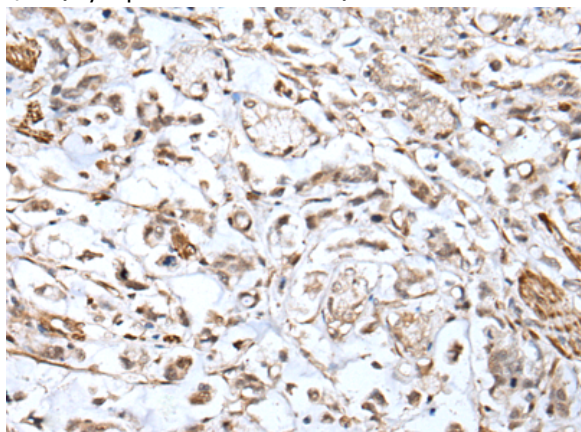
Storage & Shipping: Store at -20°C. Avoid repeated freezing and thawing



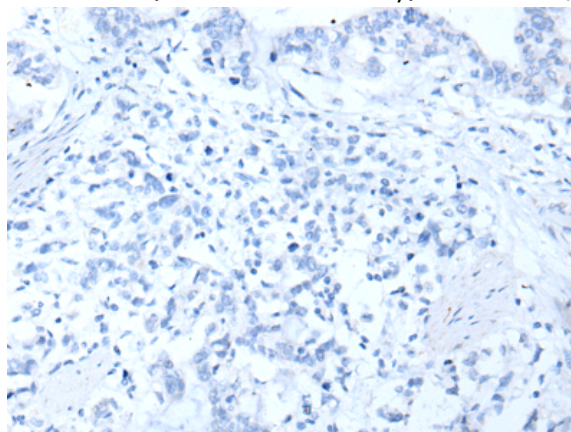
Immunohistochemistry analysis of paraffin embedded Human cervical cancer tissue using 221434(HSPB1 Antibody) at a dilution of 1/25(Cytoplasm or Nucleus).



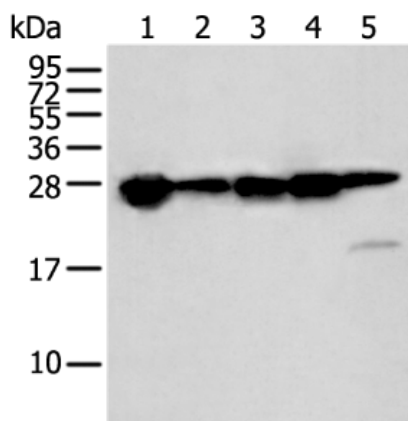
In comparison with the IHC on the left, the same paraffin-embedded Human cervical cancer tissue is first treated with the synthetic peptide and then with 221434(Anti-HSPB1 Antibody) at dilution 1/25.



The image on the left is immunohistochemistry of paraffin-embedded Human gastric cancer tissue using 221434(Anti-HSPB1 Antibody) at a dilution of 1/25.



In comparison with the IHC on the left, the same paraffin-embedded Human gastric cancer tissue is first treated with synthetic peptide and then with D263024(Anti-HSPB1 Antibody) at dilution 1/25.



Gel: 12%SDS-PAGE, Lysate: 40 µg;
 Lane 1-5: Hepg2, A431, K562, HeLa and 293T cell lysates;
 Primary antibody: 221434(HSPB1 Antibody) at dilution 1/250;
 Secondary antibody: Goat anti rabbit IgG at 1/8000 dilution;
 Exposure time: 2 seconds



Product Description

Pioneering GTPase and Oncogene Product Development since 2010
