

HSPD1 RABBIT PAB

Cat.#: S216562

Product Name: Anti-HSPD1 Rabbit Polyclonal Antibody

Synonyms: HLD4, CPN60, GROEL, HSP60, HSP65, SPG13, HSP-60, HuCHA60

UNIPROT ID: P10809 (Gene Accession - BC067082)

Background: This gene encodes a member of the chaperonin family. The encoded mitochondrial protein may function as a signaling molecule in the innate immune system. This protein is essential for the folding and assembly of newly imported proteins in the mitochondria. This gene is adjacent to a related family member and the region between the 2 genes functions as a bidirectional promoter. Several pseudogenes have been associated with this gene. Two transcript variants encoding the same protein have been identified for this gene. Mutations associated with this gene cause autosomal recessive spastic paraplegia 13.

Immunogen: Fusion protein of human HSPD1

Applications: ELISA, IHC

Recommended Dilutions: IHC: 50-150; ELISA: 1000-5000

Host Species: Rabbit

Clonality: Rabbit Polyclonal

Isotype: Immunogen-specific rabbit IgG

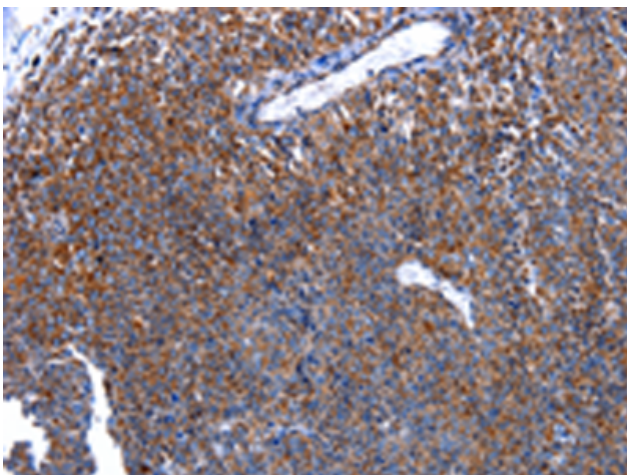
Purification: Antigen affinity purification

Species Reactivity: Human, Mouse, Rat

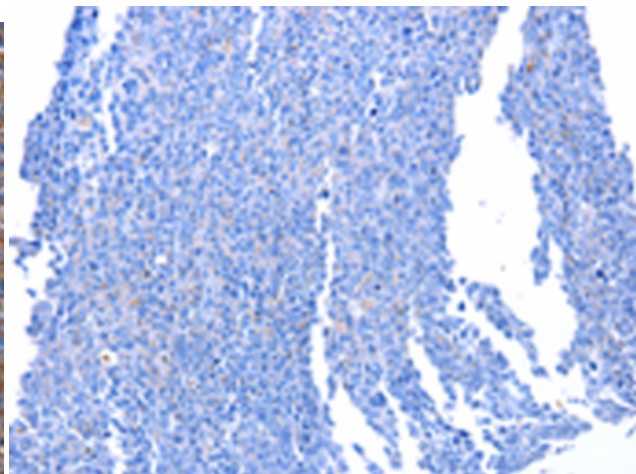
Constituents: PBS (without Mg²⁺ and Ca²⁺), pH 7.4, 150 mM NaCl, 0.05% Sodium Azide and 40% glycerol

Research Areas: Signal Transduction

Storage & Shipping: Store at -20°C. Avoid repeated freezing and thawing



Immunohistochemistry analysis of paraffin embedded Human ovarian cancer tissue using 216562(HSPD1 Antibody) at a dilution of 1/30(Cytoplasm).



In comparison with the IHC on the left, the same paraffin-embedded Human ovarian cancer tissue is first treated with the fusion protein and then with 216562(Anti-HSPD1 Antibody) at dilution 1/30.