

HSPD1 RABBIT PAB

Cat.#: S216564

Product Name: Anti-HSPD1 Rabbit Polyclonal Antibody

Synonyms: HLD4; CPN60; GROEL; HSP60; HSP65; SPG13; HSP-60; HuCHA60

UNIPROT ID: P10809 (Gene Accession - BC003030)

Background: This gene encodes a member of the chaperonin family. The encoded mitochondrial protein may function as a signaling molecule in the innate immune system. This protein is essential for the folding and assembly of newly imported proteins in the mitochondria. This gene is adjacent to a related family member and the region between the 2 genes functions as a bidirectional promoter. Several pseudogenes have been associated with this gene. Two transcript variants encoding the same protein have been identified for this gene. Mutations associated with this gene cause autosomal recessive spastic paraplegia 13.

Immunogen: Fusion protein of human HSPD1

Applications: ELISA, WB, IHC

Recommended Dilutions: IHC: 50-200;WB: 1000-5000;ELISA: 5000-10000

Host Species: Rabbit

Clonality: Rabbit Polyclonal

Isotype: Immunogen-specific rabbit IgG

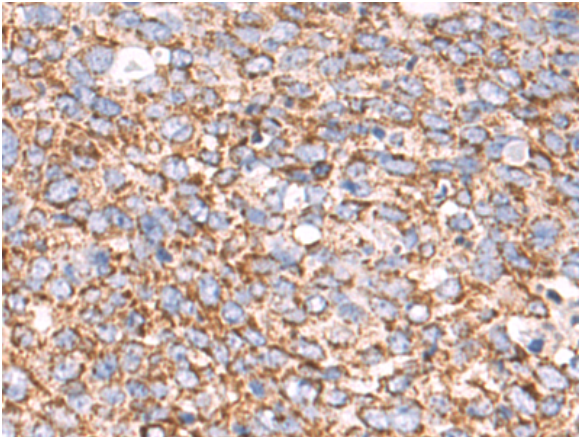
Purification: Antigen affinity purification

Species Reactivity: Human, Mouse, Rat

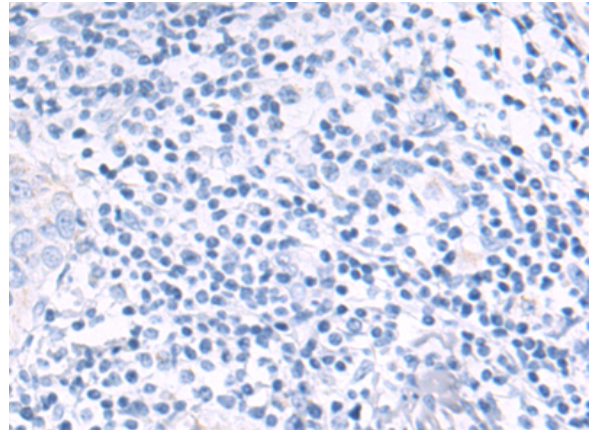
Constituents: PBS (without Mg²⁺ and Ca²⁺), pH 7.4, 150 mM NaCl, 0.05% Sodium Azide and 40% glycerol

Research Areas: Signal Transduction

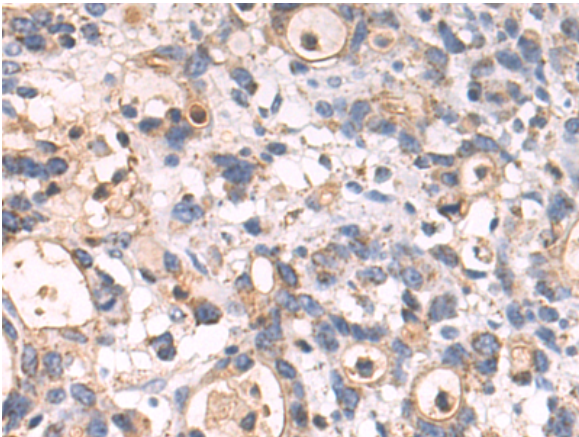
Storage & Shipping: Store at -20°C. Avoid repeated freezing and thawing



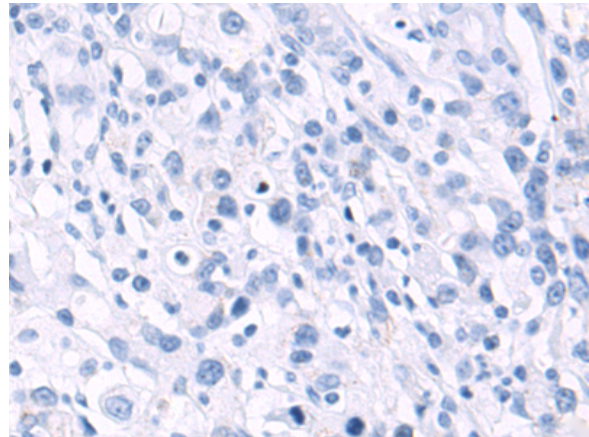
Immunohistochemistry analysis of paraffin embedded Human cervical cancer tissue using 216564(HSPD1 Antibody) at a dilution of 1/50(Cytoplasm).



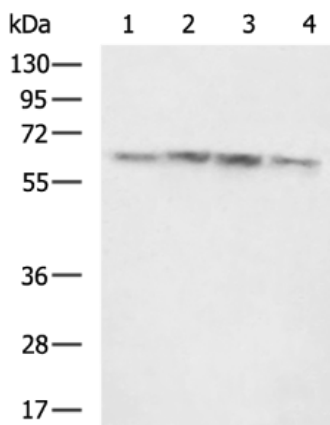
In comparison with the IHC on the left, the same paraffin-embedded Human cervical cancer tissue is first treated with the fusion protein and then with 216564(Anti-HSPD1 Antibody) at dilution 1/50.



The image on the left is immunohistochemistry of paraffin-embedded Human gastric cancer tissue using 216564(Anti-HSPD1 Antibody) at a dilution of 1/50.



In comparison with the IHC on the left, the same paraffin-embedded Human gastric cancer tissue is first treated with fusion protein and then with D220791(Anti-HSPD1 Antibody) at dilution 1/50.



Gel: 8%SDS-PAGE, Lysate: 40 µg;
 Lane 1-4: NIH/3T3 cell, Hela cell, Mouse fetal tissue,
 Mouse spleen tissue lysates;
 Primary antibody: 216564(HSPD1 Antibody) at
 dilution 1/800;
 Secondary antibody: HRP-conjugated Goat anti
 rabbit IgG at 1/5000 dilution;
 Exposure time: 1 second



Product Description

Pioneering GTPase and Oncogene Product Development since 2010
