

HTR1F RABBIT PAB

Cat.#: S222430

Product Name: Anti-HTR1F Rabbit Polyclonal Antibody

Synonyms: 5HT6; MR77; 5-HT1F; HTR1EL; 5-HT-1F

UNIPROT ID: P30939 (Gene Accession - NP_000857)

Background: Enables G protein-coupled serotonin receptor activity and serotonin binding activity. Involved in adenylate cyclase-inhibiting G protein-coupled receptor signaling pathway. Is integral component of plasma membrane.

Immunogen: Synthetic peptide of human HTR1F

Applications: ELISA, IHC

Recommended Dilutions: IHC: 50-200; ELISA: 5000-10000

Host Species: Rabbit

Clonality: Rabbit Polyclonal

Isotype: Immunogen-specific rabbit IgG

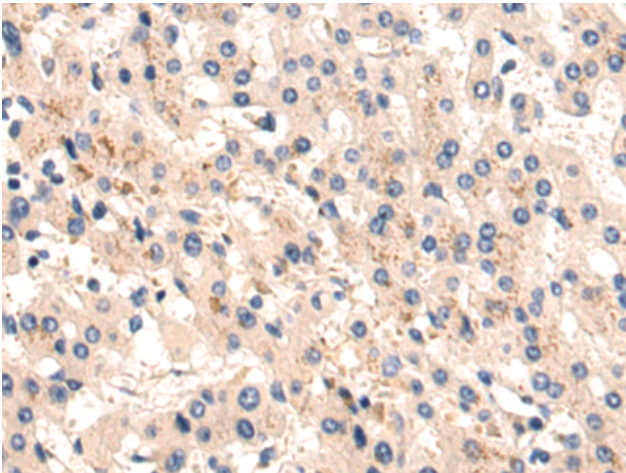
Purification: Antigen affinity purification

Species Reactivity: Human

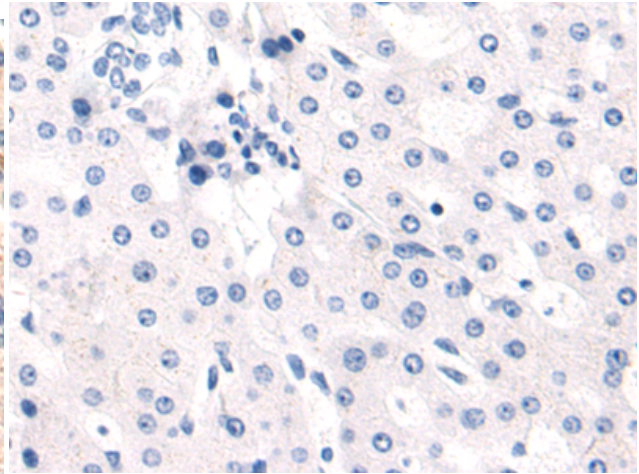
Constituents: PBS (without Mg²⁺ and Ca²⁺), pH 7.4, 150 mM NaCl, 0.05% Sodium Azide and 40% glycerol

Research Areas: Neuroscience, Metabolism

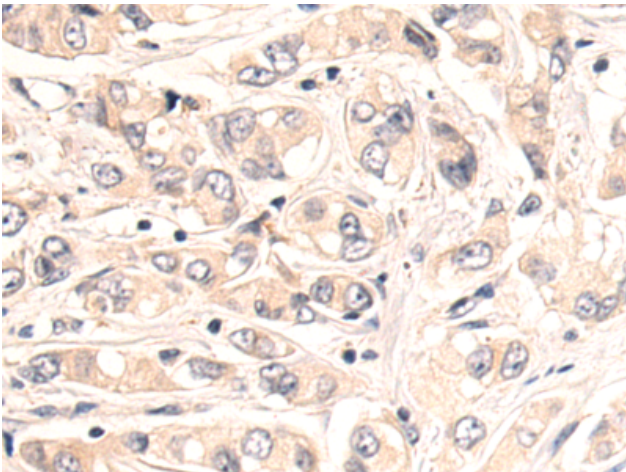
Storage & Shipping: Store at -20°C. Avoid repeated freezing and thawing



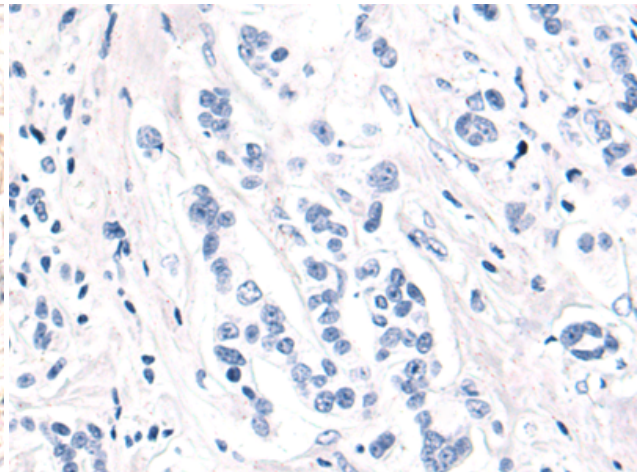
Immunohistochemistry analysis of paraffin embedded Human liver cancer tissue using 222430 (HTRIF Antibody) at a dilution of 1/50 (Cytoplasm).



In comparison with the IHC on the left, the same paraffin-embedded Human liver cancer tissue is first treated with the synthetic peptide and then with 222430 (Anti-HTRIF Antibody) at dilution 1/50.



The image on the left is immunohistochemistry of paraffin-embedded Human breast cancer tissue using 222430 (Anti-HTRIF Antibody) at a dilution of 1/50.



In comparison with the IHC on the left, the same paraffin-embedded Human breast cancer tissue is first treated with synthetic peptide and then with D264598 (Anti-HTRIF Antibody) at dilution 1/50.