

## HTRA2 (8G11) MOUSE MAB

**Cat.#:** N261437

**Product Name:** Anti-HtrA2 (8G11) Mouse Monoclonal Antibody

**Synonyms:** High temperature requirement protein A2; HTRA 2; HtrA like serine protease; HtrA serine peptidase 2; HtrA; E. coli; homolog of; 2; HtrA2; HTRA2\_HUMAN; mitochondrial; Omi stress regulated endoprotease; Omi stress-regulated endoprotease; PARK 13; PARK13; Protease serine 25; PRSS 25; PRSS25; Serine protease 25; Serine protease HTRA2; Serine protease HTRA2 mitochondrial; Serine protease htra2 mitochondrial precursor; Serine protease omi; Serine proteinase OMI.

**UNIPROT ID:** O43464

**Background:** High temperature requirement protein A2 (HtrA2)/Omi is a serine protease with homology to the E. coli HtrA protein (DegP) and is thought to be involved in apoptosis and stress-induced degradation of misfolded proteins. While HtrA2 was originally identified to be present in either the nucleus or endoplasmic reticulum, subsequent studies have shown that it localizes in mitochondria and is released during apoptosis.

**Immunogen:** Recombinant human HtrA2/Omi protein.

**Applications:** WB,IP

**Recommended Dilutions:** WB: 1/500-1/1000 IP: 1/20

**Host Species:** Mouse

**Clonality:** Mouse Monoclonal

**Clone ID:** 8G11-4B8-4F10-G5

**MW:** Calculated MW: 49 kDa; Observed MW: 37 kDa

**Isotype:** IgG1

**Purification:** Affinity Purified

**Species Reactivity:** Human

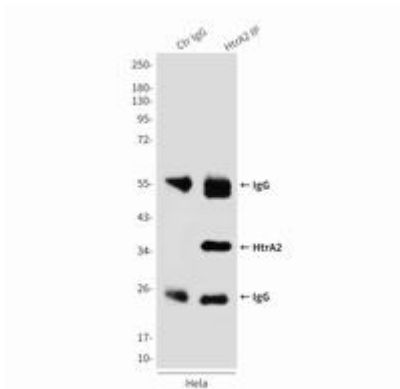
**Conjugation:** Unconjugated

**Modification:** Unmodified

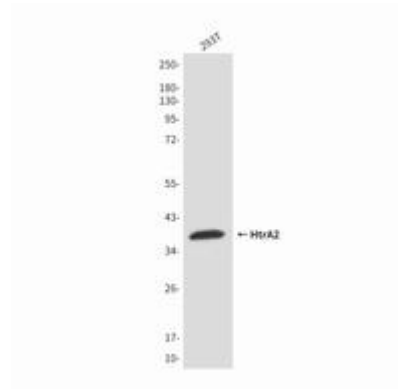
**Constituents:** PBS (without Mg<sup>2+</sup> and Ca<sup>2+</sup>), pH 7.3 containing 50% glycerol, 0.5% BSA and 0.02% sodium azide

**Research Areas:** Neuroscience

**Storage & Shipping:** Store at -20°C. Avoid repeated freezing and thawing



Immunoprecipitation analysis of HtrA2 (8G11) in HeLa lysates using HtrA2/Omi antibody.



Western blot analysis of HtrA2/Omi in 293T lysates using HtrA2/Omi antibody.