

HTRA2 RABBIT MAB

Cat.#: N262376

Product Name: Anti-HtrA2 Rabbit Monoclonal Antibody

Synonyms: High temperature requirement protein A2; HTRA 2; HtrA like serine protease; HtrA serine peptidase 2; HtrA; E. coli; homolog of; 2; HtrA2; HTRA2_HUMAN; mitochondrial; Omi stress regulated endoprotease; Omi stress-regulated endoprotease; PARK 13; PARK13; Protease serine 25; PRSS 25; PRSS25; Serine protease 25; Serine protease HTRA2; Serine protease HTRA2 mitochondrial; Serine protease htra2 mitochondrial precursor; Serine protease omi; Serine proteinase OMI.

UNIPROT ID: O43464

Background: High temperature requirement protein A2 (HtrA2)/Omi is a serine protease with homology to the E. coli HtrA protein (DegP) and is thought to be involved in apoptosis and stress-induced degradation of misfolded proteins. While HtrA2 was originally identified to be present in either the nucleus or endoplasmic reticulum, subsequent studies have shown that it localizes in mitochondria and is released during apoptosis.

Immunogen: A synthetic peptide of human HtrA2/Omi

Applications: WB,IHC-F,IHC-P,ICC/IF,IP

Recommended Dilutions: WB: 1/500-1/1000 IHC: 1/50-1/100 IF: 1/50-1/200 IP: 1/20

Host Species: Rabbit

Clonality: Rabbit Monoclonal

Clone ID: R06-9E4

MW: Calculated MW: 49 kDa; Observed MW: 36 kDa

Isotype: IgG

Purification: Affinity Purified

Species Reactivity: Human,Mouse

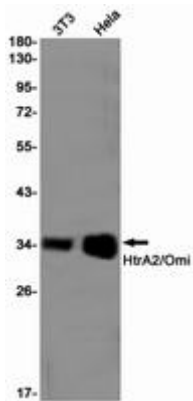
Conjugation: Unconjugated

Modification: Unmodified

Constituents: PBS (without Mg²⁺ and Ca²⁺), pH 7.3 containing 50% glycerol, 0.5% BSA and 0.02% sodium azide

Research Areas: Neuroscience

Storage & Shipping: Store at -20°C. Avoid repeated freezing and thawing



Western blot analysis of HtrA2/Omi in 3T3, HeLa lysates using HtrA2 antibody.