

HUMAN IGD RABBIT PAB

Cat.#: N225977

Product Name: Anti-Human IgD Rabbit pAb

Synonyms: Ig delta chain C region

UNIPROT ID: P01880

Background: There are two named isoforms of IGHD produced by alternative splicing, a secreted form and a single pass type I membrane protein.

Immunogen: A synthesized peptide derived from human IGHD

Applications: WB,IHC-P

Recommended Dilutions: WB: 1/500-1/1000 IHC: 1/50-1/100

Host Species: Rabbit

Clonality: Rabbit Polyclonal

Clone ID: -

MW: Calculated MW: 42 kDa; Observed MW: 84 kDa

Isotype: IgG

Purification: Affinity Chromatography

Species Reactivity: Human

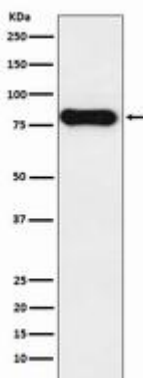
Conjugation: Unconjugated

Modification: Unmodified

Constituents: PBS (without Mg²⁺ and Ca²⁺), pH 7.3 containing 50% glycerol, 0.5% BSA and 0.02% sodium azide

Research Areas: Immunology

Storage & Shipping: Store at -20°C. Avoid repeated freezing and thawing



Western blot analysis of IGHD in Human tonsil lysates using Human IgD antibody.



Product Description

Pioneering GTPase and Oncogene Product Development since 2010
