

## HUMAN IGG3 RABBIT PAB

**Cat.#:** N225877

**Product Name:** Anti-Human IgG3 Rabbit pAb

**Synonyms:** IgG3; G3m marker; HDC; Heavy chain disease protein; Ig gamma 3 chain C region; IGHG3 protein

**UNIPROT ID:** P01860

**Background:** IgG is a monomeric immunoglobulin, built of two heavy chains gamma and two light chains. Each molecule has two antigen binding sites. This is the most abundant immunoglobulin and is approximately equally distributed in blood and in tissue liquids, constituting 75% of serum immunoglobulins in humans.

**Immunogen:** A synthesized peptide derived from human Human IgG3

**Applications:** WB,IP

**Recommended Dilutions:** WB: 1/500-1/1000 IP: 1/20

**Host Species:** Rabbit

**Clonality:** Rabbit Polyclonal

**Clone ID:** -

**MW:** Calculated MW: 41 kDa; Observed MW: 41 kDa

**Isotype:** IgG

**Purification:** Affinity Chromatography

**Species Reactivity:** Human

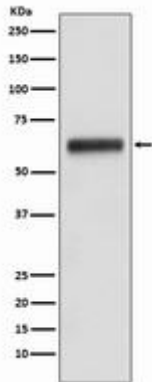
**Conjugation:** Unconjugated

**Modification:** Unmodified

**Constituents:** PBS (without Mg<sup>2+</sup> and Ca<sup>2+</sup>), pH 7.3 containing 50% glycerol, 0.5% BSA and 0.02% sodium azide

**Research Areas:** Immunology

**Storage & Shipping:** Store at -20°C. Avoid repeated freezing and thawing



Western blot analysis of Human IgG3 in Human plasma lysates using Human IgG3 antibody.