

## HUMAN IGG4 RABBIT PAB

**Cat.#:** N225617

**Product Name:** Anti-Human IgG4 Rabbit pAb

**Synonyms:** IGG4; Ig gamma 4 chain C region

**UNIPROT ID:** P01861

**Background:** IgG is a monomeric immunoglobulin, built of two heavy chains gamma and two light chains. Each molecule has two antigen binding sites. This is the most abundant immunoglobulin and is approximately equally distributed in blood and in tissue liquids, constituting 75% of serum immunoglobulins in humans.

**Immunogen:** A synthesized peptide derived from human IgG4

**Applications:** WB,IHC-P

**Recommended Dilutions:** WB: 1/500-1/1000 IHC: 1/50-1/100

**Host Species:** Rabbit

**Clonality:** Rabbit Polyclonal

**Clone ID:** -

**MW:** Calculated MW: 36 kDa; Observed MW: 36 kDa

**Isotype:** IgG

**Purification:** Affinity Chromatography

**Species Reactivity:** Human

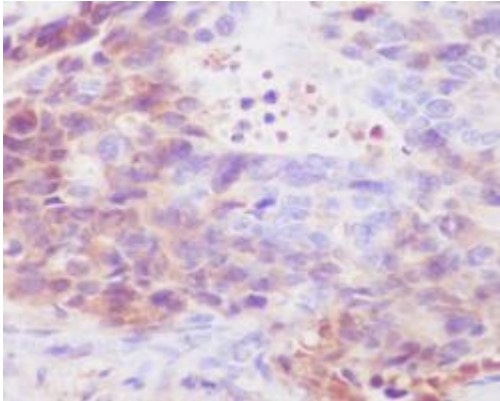
**Conjugation:** Unconjugated

**Modification:** Unmodified

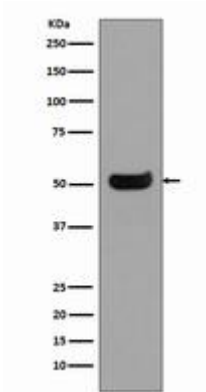
**Constituents:** PBS (without Mg<sup>2+</sup> and Ca<sup>2+</sup>), pH 7.3 containing 50% glycerol, 0.5% BSA and 0.02% sodium azide

**Research Areas:** Immunology

**Storage & Shipping:** Store at -20°C. Avoid repeated freezing and thawing



Immunohistochemistry analysis of paraffin-embedded Human stomach carcinoma using IgG4 antibody. High-pressure and temperature Sodium Citrate pH 6.0 was used for antigen retrieval.



Western blot analysis of IgG4 in Human spleen lysates using Human IgG4 antibody.