

HUMAN KAPPA LIGHT CHAIN RABBIT PAB

Cat.#: N225254

Product Name: Anti-Human kappa Light Chain Rabbit pAb

Synonyms: HCAK1; Ig kappa chain C region; IGKC; IMMUNOGLOBULIN InV; Km

UNIPROT ID: P01834

Background: Constant region of immunoglobulin light chains. Immunoglobulins, also known as antibodies, are membrane-bound or secreted glycoproteins produced by B lymphocytes. In the recognition phase of humoral immunity, the membrane-bound immunoglobulins serve as receptors which, upon binding of a specific antigen, trigger the clonal expansion and differentiation of B lymphocytes into immunoglobulin-secreting plasma cells.

Immunogen: Other Immunogen Type corresponding to Human Kappa light chain(constant).

Applications: WB,ELISA

Recommended Dilutions: WB: 1/500-1/1000 ELISA: 1/10000

Host Species: Rabbit

Clonality: Rabbit Polyclonal

Clone ID: -

MW: Calculated MW: 12 kDa; Observed MW: 25 kDa

Isotype: IgG

Purification: Affinity Purified

Species Reactivity: Human

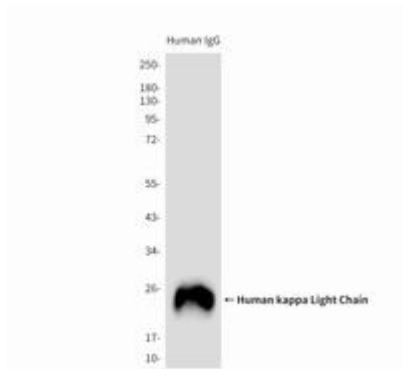
Conjugation: Unconjugated

Modification: Unmodified

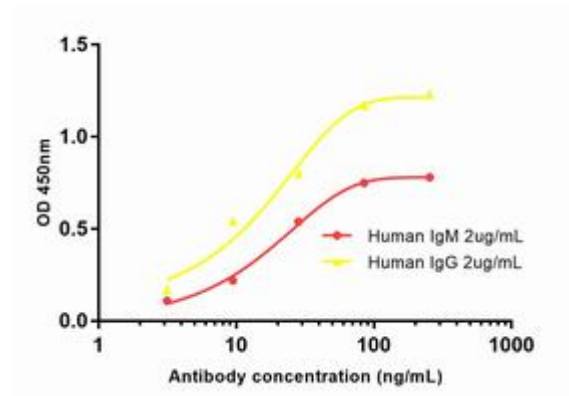
Constituents: PBS (without Mg²⁺ and Ca²⁺), pH 7.3 containing 50% glycerol, 0.5% BSA and 0.02% sodium azide

Research Areas: Immunology

Storage & Shipping: Store at -20°C. Avoid repeated freezing and thawing



Western blot analysis of Human kappa Light Chain in total Human IgG reduced and denatured in 2X SDS loading buffer with DTT using Human kappa Light Chain antibody



Indirect ELISA assay for Rabbit Human kappa light chain antibody. Antigen coating concentration: 2ug/ml.