

HUMAN LAMBDA LIGHT CHAIN RABBIT PAB

Cat.#: N225255

Product Name: Anti-Human lambda Light Chain Rabbit pAb

Synonyms: IGLC1

UNIPROT ID: P0CG04

Background: Constant region of immunoglobulin light chains. Immunoglobulins, also known as antibodies, are membrane-bound or secreted glycoproteins produced by B lymphocytes. In the recognition phase of humoral immunity, the membrane-bound immunoglobulins serve as receptors which, upon binding of a specific antigen, trigger the clonal expansion and differentiation of B lymphocytes into immunoglobulin-secreting plasma cells.

Immunogen: Full length native protein (purified) corresponding to Human Human IgG Lambda Light Chain. Human IgG purified from Human plasma.

Applications: WB,ELISA

Recommended Dilutions: WB: 1/500-1/1000 ELISA: 1/10000

Host Species: Rabbit

Clonality: Rabbit Polyclonal

Clone ID: -

MW: Calculated MW: 11 kDa; Observed MW: 23 kDa

Isotype: IgG

Purification: Affinity Purified

Species Reactivity: Human

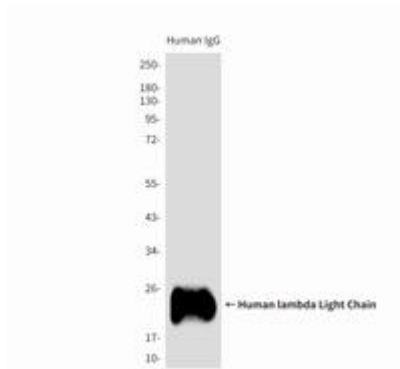
Conjugation: Unconjugated

Modification: Unmodified

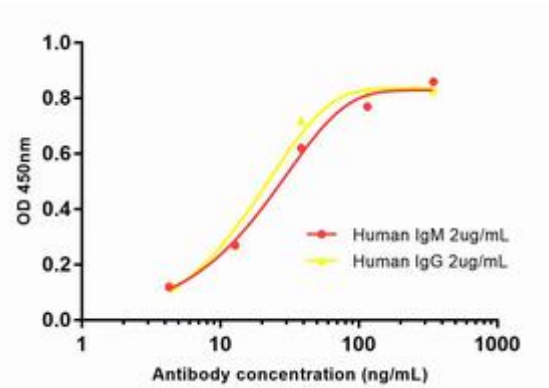
Constituents: PBS (without Mg²⁺ and Ca²⁺), pH 7.3 containing 50% glycerol, 0.5% BSA and 0.02% sodium azide

Research Areas: Immunology

Storage & Shipping: Store at -20°C. Avoid repeated freezing and thawing



Western blot analysis of Human lambda Light Chain in total Human IgG reduced and denatured in 2X SDS loading buffer with DTT using Human lambda Light Chain antibody



Indirect ELISA assay for Rabbit Human kappa light chain antibody. Antigen coating concentration: 2ug/ml.