

## HUMAN SERUM ALBUMIN (7D1) MOUSE MAB

**Cat.#:** N261406

**Product Name:** Anti-Human Serum Albumin (7D1) Mouse Monoclonal Antibody

**Synonyms:** ALB; ALBU\_HUMAN; Albumin (32 AA); Albumin (AA 34); Albumin; Analbuminemia; Bisalbuminemia; Cell growth inhibiting protein 42; DKFZp779N1935; Dysalbuminemic hyperthyroxinemia; Growth inhibiting protein 20; HSA; Hyperthyroxinemia dysalbuminemic; Serum albumin.

**UNIPROT ID:** P02768

**Background:** Albumin is a soluble, monomeric protein which comprises about one-half of the blood serum protein. Albumin functions primarily as a carrier protein for steroids, fatty acids, and thyroid hormones and plays a role in stabilizing extracellular fluid volume.

**Immunogen:** Purified Human serum albumin.

**Applications:** WB,ELISA

**Recommended Dilutions:** WB: 1/500-1/1000 ELISA: 1/10000

**Host Species:** Mouse

**Clonality:** Mouse Monoclonal

**Clone ID:** 7D1-C10-E7

**MW:** Calculated MW: 69 kDa; Observed MW: 69 kDa

**Isotype:** IgG1

**Purification:** Affinity Purified

**Species Reactivity:** Human

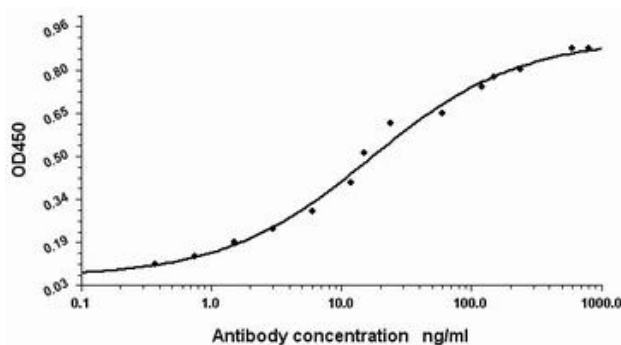
**Conjugation:** Unconjugated

**Modification:** Unmodified

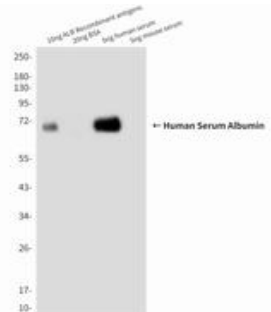
**Constituents:** PBS (without Mg<sup>2+</sup> and Ca<sup>2+</sup>), pH 7.3 containing 50% glycerol, 0.5% BSA and 0.02% sodium azide

**Research Areas:** Cardiovascular

**Storage & Shipping:** Store at -20°C. Avoid repeated freezing and thawing



Indirect ELISA assay for antiHuman Serum Albumin antibody. Antigen coating concentration: 8ug/ml.



Western blot analysis of Human Serum Albumin in 0.5nl Human serum and 10ng ALB Recombinant antigens lysates using Human Serum Albumin antibody.



# Product Description

Pioneering GTPase and Oncogene Product Development since 2010

---