

## IBA57 RABBIT PAB

**Cat.#:** S221649

**Product Name:** Anti-IBA57 Rabbit Polyclonal Antibody

**Synonyms:** MMDS3; SPG74; Clorf69

**UNIPROT ID:** Q5T440 (Gene Accession - NP\_001010867 )

**Background:** The protein encoded by this gene localizes to the mitochondrion and is part of the iron-sulfur cluster assembly pathway. The encoded protein functions late in the biosynthesis of mitochondrial 4Fe-4S proteins. Defects in this gene have been associated with autosomal recessive spastic paraplegia-74 and with multiple mitochondrial dysfunctions syndrome-3. Two transcript variants encoding different isoforms have been found for this gene. The smaller isoform is not likely to be localized to the mitochondrion since it lacks the amino-terminal transit peptide.

**Immunogen:** Synthetic peptide of human IBA57

**Applications:** ELISA, IHC

**Recommended Dilutions:** IHC: 30-150; ELISA: 5000-10000

**Host Species:** Rabbit

**Clonality:** Rabbit Polyclonal

**Isotype:** Immunogen-specific rabbit IgG

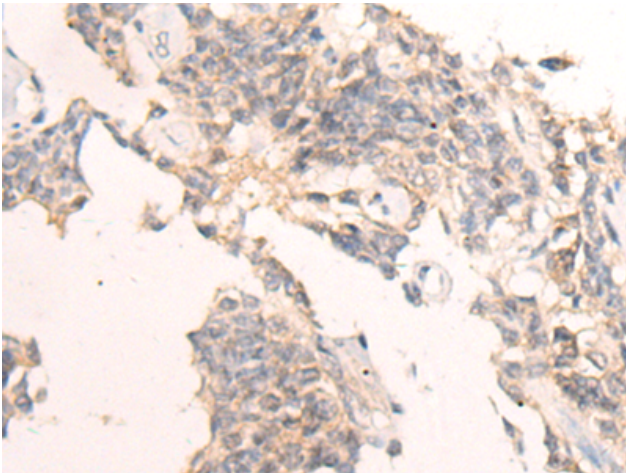
**Purification:** Antigen affinity purification

**Species Reactivity:** Human

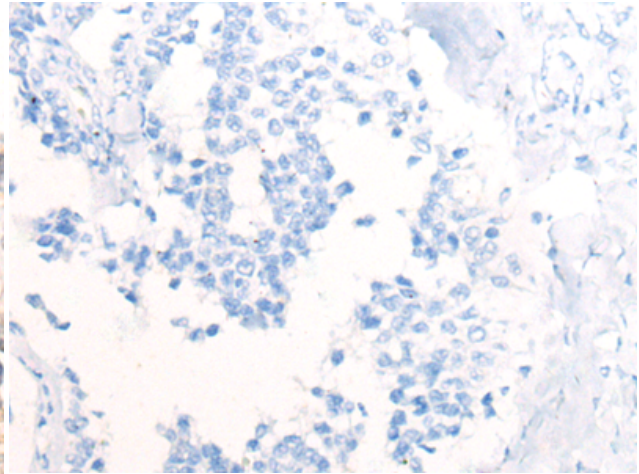
**Constituents:** PBS (without Mg<sup>2+</sup> and Ca<sup>2+</sup>), pH 7.4, 150 mM NaCl, 0.05% Sodium Azide and 40% glycerol

**Research Areas:** Cell Biology

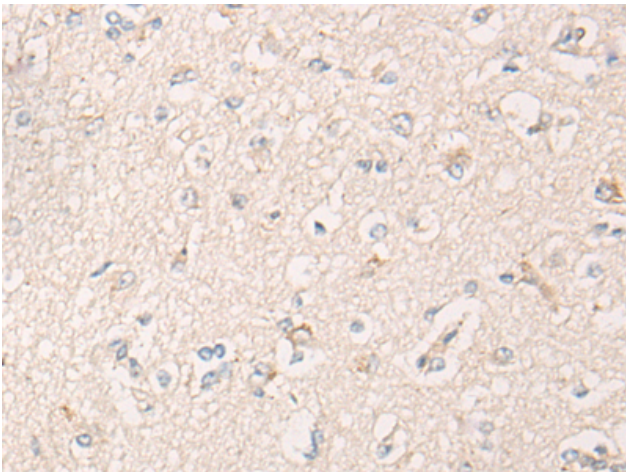
**Storage & Shipping:** Store at -20°C. Avoid repeated freezing and thawing



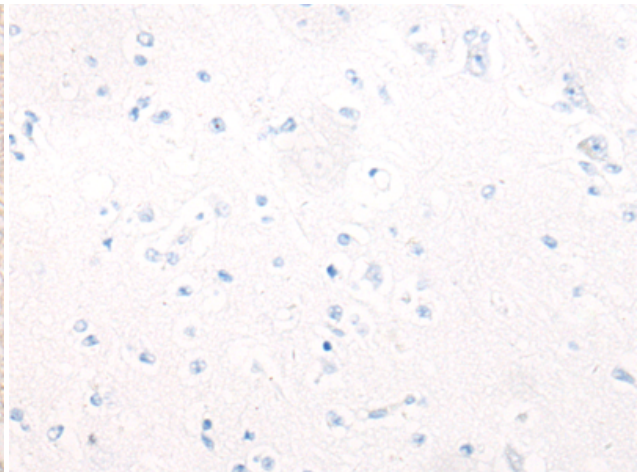
Immunohistochemistry analysis of paraffin embedded Human ovarian cancer tissue using 221649(IBA57 Antibody) at a dilution of 1/65(Cytoplasm).



In comparison with the IHC on the left, the same paraffin-embedded Human ovarian cancer tissue is first treated with the synthetic peptide and then with 221649(Anti-IBA57 Antibody) at dilution 1/65.



The image on the left is immunohistochemistry of paraffin-embedded Human brain tissue using 221649(Anti-IBA57 Antibody) at a dilution of 1/65.



In comparison with the IHC on the left, the same paraffin-embedded Human brain tissue is first treated with synthetic peptide and then with D263340(Anti-IBA57 Antibody) at dilution 1/65.