

## ICAM3 RABBIT MAB

**Cat.#:** N263377

**Product Name:** Anti-ICAM3 Rabbit Monoclonal Antibody

**Synonyms:** CD50; CDW50; ICAM-R

**UNIPROT ID:** P32942

**Background:** ICAM proteins are ligands for the leukocyte adhesion protein LFA-1 (integrin alpha-L/beta-2).

**Immunogen:** A synthetic peptide of human ICAM3

**Applications:** WB,IHC-P,IP

**Recommended Dilutions:** WB: 1/500-1/1000 IHC: 1/50-1/100 IP: 1/20

**Host Species:** Rabbit

**Clonality:** Rabbit Monoclonal

**Clone ID:** R08-0D3

**MW:** Calculated MW: 60 kDa; Observed MW: 110-160 kDa

**Isotype:** IgG

**Purification:** Affinity Purified

**Species Reactivity:** Human,Rat

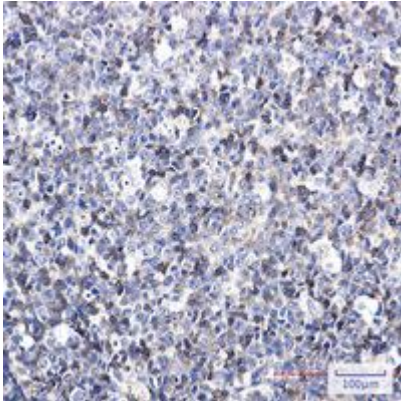
**Conjugation:** Unconjugated

**Modification:** Unmodified

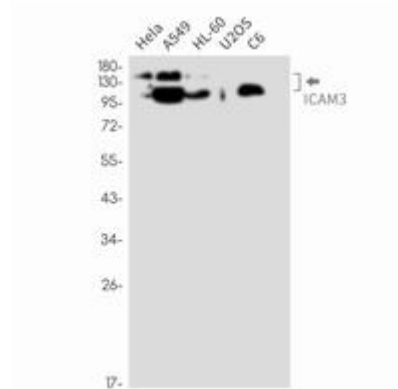
**Constituents:** PBS (without Mg<sup>2+</sup> and Ca<sup>2+</sup>), pH 7.3 containing 50% glycerol, 0.5% BSA and 0.02% sodium azide

**Research Areas:** Signal Transduction

**Storage & Shipping:** Store at -20°C. Avoid repeated freezing and thawing



Immunohistochemistry analysis of paraffin-embedded Human tonsil using ICAM3 antibody. High-pressure and temperature Sodium Citrate pH 6.0 was used for antigen retrieval.



Western blot analysis of ICAM3 in HeLa, A549, HL-60, U2OS, C6 lysates using ICAM3 antibody.