

ICOSLG RABBIT PAB

Cat.#: S213390

Product Name: Anti-ICOSLG Rabbit Polyclonal Antibody

Synonyms: B7h; B7H2; GL50; B7-H2; B7RP1; CD275; ICOSL; LICOS; B7RP-1; ICOS-L

UNIPROT ID: O75144 (Gene Accession - NP_056074)

Background: Enables identical protein binding activity. Predicted to be involved in T cell receptor signaling pathway and positive regulation of interleukin-4 production. Located in cytoplasmic ribonucleoprotein granule and plasma membrane.

Immunogen: Synthetic peptide of human ICOSLG

Applications: ELISA, WB, IHC

Recommended Dilutions: IHC: 50-200;WB: 500-2000;ELISA: 5000-10000

Host Species: Rabbit

Clonality: Rabbit Polyclonal

Isotype: Immunogen-specific rabbit IgG

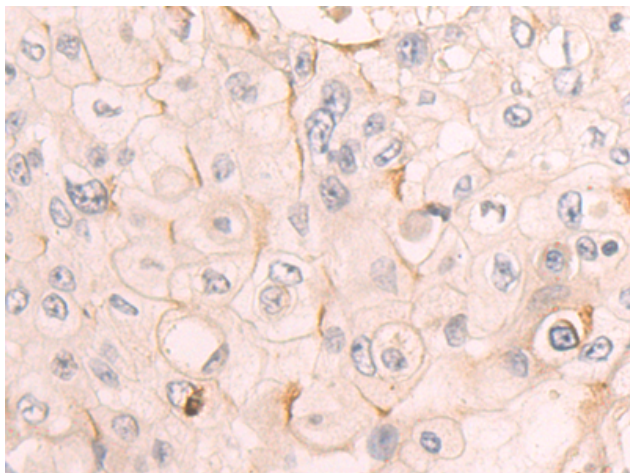
Purification: Antigen affinity purification

Species Reactivity: Human

Constituents: PBS (without Mg²⁺ and Ca²⁺), pH 7.4, 150 mM NaCl, 0.05% Sodium Azide and 40% glycerol

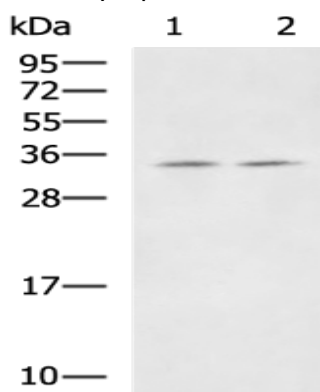
Research Areas: Immunology

Storage & Shipping: Store at -20°C. Avoid repeated freezing and thawing



✘ In comparison with the IHC on the left, the same paraffin-embedded Human esophagus cancer tissue is first treated with the synthetic peptide and then with 213390 (Anti-ICOSLG Antibody) at dilution 1/50.

Immunohistochemistry analysis of paraffin embedded Human esophagus cancer tissue using 213390 (ICOSLG Antibody) at a dilution of 1/50 (Cytoplasm and Cell membrane).



Gel: 12% SDS-PAGE, Lysate: 40 μ g;
Lane 1-2: A172 and HUVEC cell lysates;
Primary antibody: 213390 (ICOSLG Antibody) at dilution 1/650;
Secondary antibody: HRP-conjugated Goat anti rabbit IgG at 1/5000 dilution;
Exposure time: 2 minutes