

ID4 RABBIT PAB

Cat.#: S219789

Product Name: Anti-ID4 Rabbit Polyclonal Antibody

Synonyms: IDB4, bHLHb27

UNIPROT ID: P47928 (Gene Accession - NP_001537)

Background: DNA-binding protein inhibitor ID-4 is a protein that in humans is encoded by the ID4 gene. Transcription factors containing a basic helix-loop-helix (bHLH) motif regulate expression of tissue-specific genes in a number of mammalian and insect systems. DNA-binding activity of the bHLH proteins is dependent on formation of homo- and/or heterodimers. Dominant-negative (antimorph) HLH proteins encoded by Id-related genes, such as ID4, also contain the HLH-dimerization domain but lack the DNA-binding basic domain. Consequently, Id proteins inhibit binding to DNA and transcriptional transactivation by heterodimerization with bHLH proteins .

Immunogen: Synthetic peptide of human ID4

Applications: ELISA, IHC

Recommended Dilutions: IHC: 20-100; ELISA: 1000-5000

Host Species: Rabbit

Clonality: Rabbit Polyclonal

Isotype: Immunogen-specific rabbit IgG

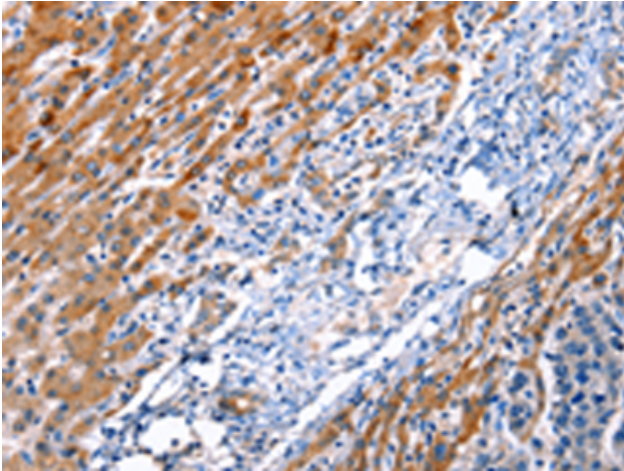
Purification: Antigen affinity purification

Species Reactivity: Human, Mouse

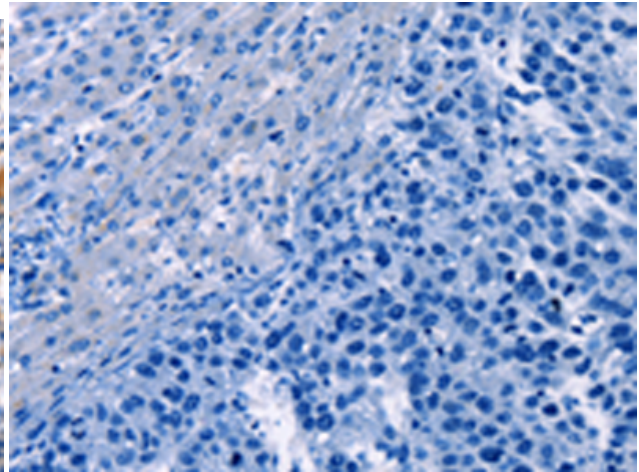
Constituents: PBS (without Mg²⁺ and Ca²⁺), pH 7.4, 150 mM NaCl, 0.05% Sodium Azide and 40% glycerol

Research Areas: Epigenetics and Nuclear Signaling, Signal Transduction

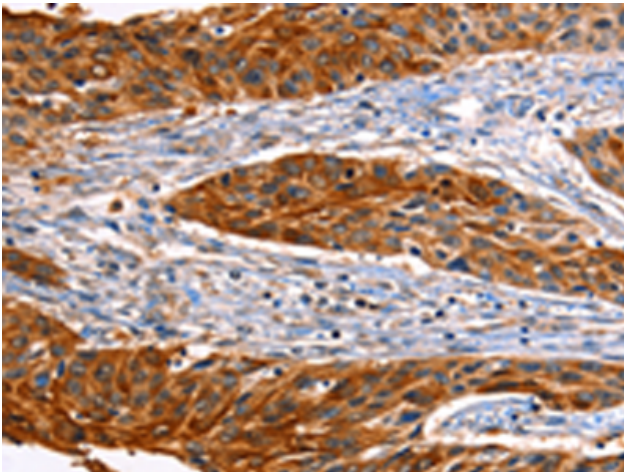
Storage & Shipping: Store at -20°C. Avoid repeated freezing and thawing



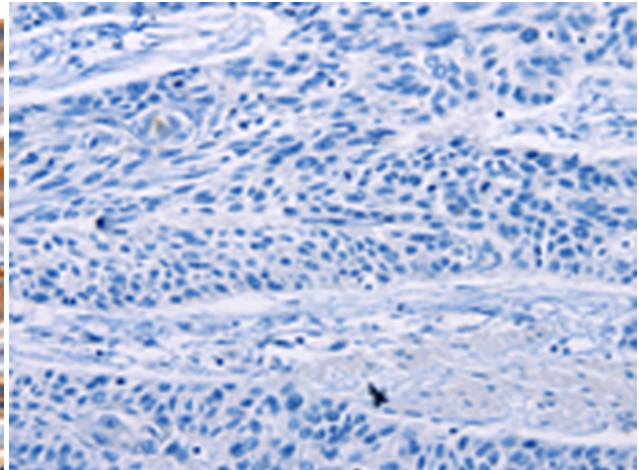
Immunohistochemistry analysis of paraffin embedded Human esophagus cancer tissue using 219789 (ID4 Antibody) at a dilution of 1/20 (Cytoplasm).



In comparison with the IHC on the left, the same paraffin-embedded Human esophagus cancer tissue is first treated with the synthetic peptide and then with 219789 (Anti-ID4 Antibody) at dilution 1/20.



The image on the left is immunohistochemistry of paraffin-embedded Human liver cancer tissue using 219789 (Anti-ID4 Antibody) at a dilution of 1/20.



In comparison with the IHC on the left, the same paraffin-embedded Human liver cancer tissue is first treated with synthetic peptide and then with D260373 (Anti-ID4 Antibody) at dilution 1/20.